

## Table of CONTENTS

Table of Contents/ Schedule	1
Head Coach Jody Butera	2
Asst. Coach Davin Testerman	3
Season Outlook	4-5
2006 Roster	6
Player Bios	7-14
2005 Results/ Stats	15
2005 GLVC Stats	16-17
2005 Recap	18-19
GLVC Opponents	20-21
Career Records	22
Season Records	23
Team Records	24
Individual Records	25
Year-by-Year Leaders	26
Year-by-Year Results	27-29
All-Time Roster	30
Facility	30
UIndy President / Athletic Director	31
Conference Champions	32

## University INFORMATION

Location	Indianapolis, Ind.
Founded	1902
Enrollment	4,300
Nickname	Greyhounds
Colors	Crimson & Grey
Affiliation	NCAA II
Conference	Great Lakes Valley Conference (GLVC)
President	Dr. Beverley J. Pitts
Director of Athletics	Dr. Sue Willey
Faculty Representative	Dr. Lawrence Sondhaus
Head Athletic Trainer	Ned Shannon

## Coaching STAFF

Head Coach	Jody Butera (E. Connecticut St., '93)
Indianapolis Record/ career	200-129, 10th season/ same
Assistant Coach	Davin Testerman

## Team INFORMATION

Arena (capacity)	Ruth Lilly Fitness Center (1,000)
2005 record	24-14
2005 GLVC record (finish)	11-5 (2nd)
All-Time Record (since 1978)	425-383 (.526)
Starters Returning/ Lost	2/4
Letterwinners Returning/ Lost	5/7

## Returning LETTERWINNERS

Alyssa Carlotta	.OPP
Ashley Fallos	.OH
Beth Robbins	.S
Lynne Ross	.MB
Cassie Schott	.OH

## Key LOSSES

Whitney Boling	.OH	<i>First team All-GLVC, led team in kills (412)</i>
Emily Huey	.S	<i>Four-year letter winner, led team in assists (939)</i>

## 2006 SCHEDULE

08/25	vs. Ouachita Baptist #	12:00pm
08/25	vs. Montevallo #	4:00pm
08/26	vs. Southern Arkansas #	9:30am
08/26	vs. West Alabama #	1:30pm
08/30	at Indiana Wesleyan	7:00pm
09/01	vs. Grand Valley State %	12:00pm
09/01	at Ashland %	4:00pm
09/02	vs. North Alabama %	9:00am
09/02	vs. Palm Beach Atlantic %	3:00pm
09/06	at Indiana-Southeast	7:00pm
09/08	BELLARMINE*	7:00pm
09/09	NORTHERN KENTUCKY*	3:00pm
09/11	MARIAN	7:00pm
09/15	SOUTHERN INDIANA*	7:00pm
09/16	SIU EDWARDSVILLE*	3:00pm
09/19	SAINT JOSEPH'S*	7:00pm
09/22	at Northern Kentucky*	7:00pm
09/23	at Bellarmine*	3:00pm
09/26	at St. Francis (Ind.)	7:00pm
09/29	WISCONSIN-PARKSIDE*	7:00pm
09/30	LEWIS* (Homecoming)	3:00pm
10/03	TAYLOR	7:00pm
10/06	at Rockhurst*	7:00pm
10/07	at Drury*	3:00pm
10/10	at Lewis*	7:00pm
10/13	KENTUCKY WESLEYAN*	7:00pm
10/17	at Saint Joseph's*	7:00pm
10/19	at Hillsdale	7:00pm
10/21	WEST VIRGINIA STATE (Senior Day)	3:00pm
10/27	at Missouri-St. Louis*	7:00pm
10/28	at Quincy*	3:00pm
11/02	GLVC Championships	TBA
11/08	NCAA Regionals	TBA
11/16	NCAA Elite Eight	TBA

Home games in ALL CAPS . . . . . All times Eastern

\* - GLVC game

# - Christian Brothers Fall Classic (Memphis, Tenn.)

% - Ashland Invitational (Ashland, Ohio)

## UIndy SPORTS INFORMATION OFFICE

1400 East Hanna Ave  
Indianapolis, Ind. 46227  
phone: 317-788-3494 fax: 317-788-3472  
<http://athletics.uindy.edu>

### Mitchell Wigness

Assistant Athletic Director for Sports Information  
email: [mwigness@uindy.edu](mailto:mwigness@uindy.edu)

### Ryan Thorpe

Assistant Sports Information Director  
email: [thorper@uindy.edu](mailto:thorper@uindy.edu)

The 2006 University of Indianapolis Volleyball Media Guide is a production of the Greyhound Sports Information Office. The publication was written and compiled by Assistant Sports Information Director Ryan Thorpe and edited by Mitchell Wigness, Assistant Athletic Director for Sports Information. Design assistance by Alecia Wigness. Photo credits to Malcolm Fancher, Brian Drumm.

## Jody BUTERA

HEAD COACH ■ 10TH SEASON ■ 200-129 OVERALL RECORD



### Butera's File

5th head coach in school's history

Alma Mater E. Conn. St. ('93)  
Career Record 200-129

### Coaching experience

2005	Head Coach	Indianapolis
2004	Head Coach	Indianapolis
2003	Head Coach	Indianapolis
2002	Head Coach	Indianapolis
2001	Head Coach	Indianapolis
2000	Head Coach	Indianapolis
1999	Head Coach	Indianapolis
1998	Head Coach	Indianapolis
1997	Head Coach	Indianapolis
1996	Asst. Coach	Springfield Coll.
1995	Asst. Coach	Springfield Coll.
1994	Asst. Coach	Springfield Coll.
1993	Asst. Coach	E. Connecticut

### Coaching Record

	Overall			GLVC		
	W	L	Pct.	W	L	Pct.
1997	16	20	0.444	4	13	0.235
1998	9	22	0.290	1	15	0.063
1999	22	15	0.595	4	12	0.250
2000	26	12	0.684	7	9	0.438
2001	25	10	0.714	8	6	0.571
2002	26	12	0.684	9	6	0.600
2003	29	11	0.725	12	3	0.800
2004	23	13	0.639	12	4	0.750
2005	24	14	0.632	11	5	0.688
Tot.	200	129	0.608	68	73	0.482

### Playing experience

1991-92	E. Connecticut
1989-90	Miami-Dade CC

Jody Butera is in her tenth year as UIndy volleyball coach, entering the 2006 campaign with a 200-129 mark (.608). She recently completed a four-year term on the NCAA II Great Lakes Region Advisory Committee.

Butera has led her teams to seven straight 20-win seasons, compiling a 175-87 record (.668) over that span. The 2005 squad went 24-14, including a 10-2 mark in October, on the way to a conference final appearance. Butera earned her 200th career victory by knocking off top-seeded Rockhurst in the GLVC tournament semi-finals.

The 2004 team recorded a 23-13 mark, winning ten straight matches at one point, including winning 26 straight games during that stretch. The team finished in the top twenty in all of Division II in hitting percentage.

Her 2003 edition earned the school's first NCAA Tournament berth by winning the Great Lakes Valley Conference Tournament for the first time. The Hounds took eventual Great Lakes Regional champion Grand Valley State to five games in the NCAA Tournament, finishing the campaign with the best record in school history (29-11, .725). The Hounds ranked nationally in hitting percentage (28th) and blocks per game (12th) at the DII level.

Her 2002 squad won 26 matches, tying a personal-best at the time. Her '02 Hounds were ranked sixth in the NCAA II Great Lakes Region. They earned their third straight GLVC Tournament berth, defeating third seed SIU Edwardsville in the quarter-finals. The Hounds swept Northern Kentucky for the first time ever after winning the Ashland and Bentley Invitationals. Butera collected career victory number 100 by sweeping St. Francis (Ind.) that season.

In 2001, she led her team to 25 wins, tying the school's third highest season total, and an 18-1 mark in a six-week stretch, including a 7-1 GLVC start. The Hounds finished in the top

thirty of Division II squads in digs per game (30th), hitting percentage (28th) and an impressive ninth in blocks per game.

Butera led her 2000 Hounds to 26 wins, the second-most in school history. Her squad won the New Haven (Conn.) and Cedarville Invites. The Hounds won nine straight matches, including four GLVC contests.

Butera led her 1999 Hounds to a 22-15 record, the third-most victories in school history at the time. Her team won the Cedarville Invitational on its way to a 12-1 start.

Butera guided her 1997 UIndy squad to the Huntington Invitational championship.

A 1993 graduate of Eastern Connecticut State, Butera had been women's volleyball coach at Newbury Junior College in Brookline, Mass. She also was boys' volleyball coach at Waltham (Mass.) H.S., starting a new program in February of 1997.

In 1995-96, Butera was an athletic compliance intern at Boston College, working with BC's 32 varsity sports.

Prior to her stint at BC, Butera was an assistant volleyball coach at Springfield College (Mass.) from 1994-96.

In 1993, Butera was the assistant volleyball coach at Eastern Connecticut.

Butera was a standout volleyball player at Eastern Connecticut from 1991-92. She earned team MVP honors as a senior in 1992, serving as team captain. She played her first two collegiate campaigns at Miami-Dade CC (Fla.), with MDCC's 1989 team winning the juco national championship.

Butera earned her bachelor's in business administration from Eastern Connecticut in 1993 and her master's in physical education with a concentration in athletic administration in 1997 at Springfield College.

## Davin TESTERMAN

### Assistant Coach • 1st season at UIndy



Testerman enters his first year as a Greyhound assistant coach. He has put in six years as the assistant coach at Mississinewa High School in Gas City, Ind. Most recently he helped coach volleyball in the Muncie Burris Community School System in 2005. He attributes much of his coaching skill to his mentor, coaching great Dr. Don Shondell.

Testerman has also enjoyed success as a player at the club level. In his time with the Muncie, Ind. squad "Munciana," he was selected as the team's nominee for All-American in the Junior Olympics. He was also chosen to represent the United States in international competition as part of the All-Midwestern Team.

His love for the sport and determination to succeed will make Testerman a sure fit with Coach Butera and Greyhound athletics.

#### Testerman's File

##### Coaching experience

2005	Asst. Coach	Muncie Burris
2002	Asst. Coach	Mississinewa HS
2001	Asst. Coach	Mississinewa HS
2000	Asst. Coach	Mississinewa HS
1999	Asst. Coach	Mississinewa HS
1998	Asst. Coach	Mississinewa HS
1997	Asst. Coach	Mississinewa HS

##### Playing experience

Munciana club team

#### University of Indianapolis Volleyball Coaching Records, All-Time

Coach (Years)	W	L	Pct.
Sue Willey (1976-92)	227	251	.475
Laura Stober (1993)	13	16	.448
Paige Balka (1994-95)	26	33	.441
Thad Ferguson (1996)	7	26	.212
Jody Butera (1997- )	200	129	.608
<b>TOTALS</b>	<b>456</b>	<b>433</b>	<b>.513</b>

#### Greyhounds Season-by-Season

Year	Record	GLVC	Coach	
1976	5-6		Sue Willey	
1977	12-16		Sue Willey	
1978	12-15		Sue Willey	
1979	10-17		Sue Willey	
1980	20-15		Sue Willey	
1981	27-11		Sue Willey	
1982	25-18		Sue Willey	
1983	19-17		Sue Willey	
1984	17-11		Sue Willey	
1985	14-16	8-10	Sue Willey	
1986	13-11	7-5	Sue Willey	
1987	5-21	3-10	Sue Willey	
1988	9-19	4-7	Sue Willey	
1989	10-13	2-7	Sue Willey	
1990	4-23	1-8	Sue Willey	
1991	10-15	2-7	Sue Willey	
1992	15-13	5-4	Sue Willey	
1993	13-16	4-5	Laura Stober	
1994	16-14	9-9	Paige Balka	
1995	10-19	8-12	Paige Balka	
1996	7-26	3-14	Thad Ferguson	
1997	16-20	4-12	Jody Butera	
1998	9-22	1-13	Jody Butera	
1999	22-15	4-12	Jody Butera	
2000	26-12	7-9	Jody Butera	
2001	25-10	8-6	Jody Butera	
2002	26-12	7-6	Jody Butera	
2003	29-11	12-3	Jody Butera	
2004	23-13	12-4	Jody Butera	
2005	24-14	11-5	Jody Butera	
Yrs.	Record	Pct.	GLVC	Pct.
28	456-433	.513	122-168	.421



Coach Butera with seniors Eileen Patton (left) and Lynne Ross.

After graduating the second-most prolific finisher in school history and the team's top setter, Coach Jody Butera's roster has thirteen spots in 2006, eight of which are filled by newcomers. With a mix of transfers, incoming freshmen and a first-year senior, this season's version of the UIndy volleyball squad is a fresh one. However, since the veterans and the newbies collectively bring athleticism, many post season honors and even Division I experience, this version could also be a refreshing one by season's end.

#### The Seniors

The Hounds will look to the middle for leadership in '06. Middle blocker **Lynne Ross** represents the only upperclassman with a varsity letter from last season's conference runner-up. Ross sports a robust game, making her an all-around threat. The 6-foot senior racked-up over 350 kills, 150 blocks and a .300 hitting percentage. Her block total of 154 was good for a share of the conference lead in 2005. Her career sum, now at 421, should threaten the school's all-time mark of 531 set by Jennifer Johnson, 1993-96.

Ross, coming off an All-GLVC honorable mention last season, earned the title of "Team Captain" in '06. Butera feels she is more than ready to shoulder the responsibilities therein.

Butera on Ross: "Lynne is very deserving of being named captain because she has displayed leadership qualities on and off the court for four years. Lynne is a great person and is well respected by her teammates and especially the coaching staff."

**Eileen Patton** rounds out the class of '07. She elected for an athletic change of scenery this school year, as she moved from Nicoson Hall to the Ruth Lilly Center. Patton is a three-time letter winner on the UIndy basketball team. The 6-foot-4 senior could be an intimidating sight to Greyhound opponents. The multi-talented Patton is also the national president of the Student-Athlete Advisory Committee (SAAC).



#### The Juniors

Though neither was with the Hounds last year, **Casey Chrzastowski** and **Elizabeth Shuyler** each had successful seasons with their respective schools.

A prolific offensive player, Chrzastowski comes to UIndy from cross-town IUPUI. The 2004 Mid-Con Freshman of the Year left the D-I school as the Jaguars' all-time leader in attack attempts per game. Butera will look to her to fill the void left by the graduation of All-GLVC First Teamer Whitney Boling.

"Casey will be a great addition for us," Butera said. "She brings Division I experience and will have a huge impact on our team."

Shuyler will represent a strong component of the UIndy middle. The six-footer comes to Indianapolis from Walla Walla Community College after being named 2nd Team Junior College All-American by the AVCA. She reached triple-digits in blocks last season and broke the school's single-match block record.

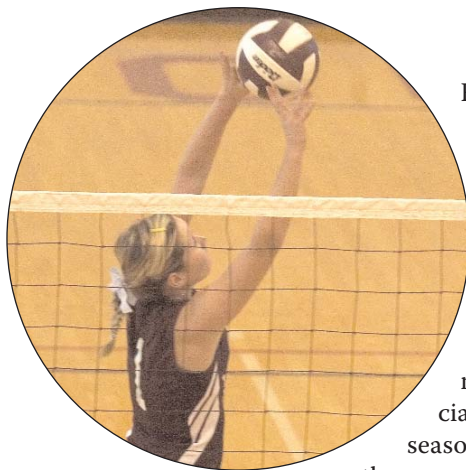
"She's extremely quick with great foot speed," Butera noted of Shuyler. "She knows what it takes to be competitive and win. Shuyler is a tremendous competitor and should come in and make immediate impact."

Along with fellow blocker Ross, opponents could find it difficult to score on the Hounds in '06.

#### The Sophomores

Butera will draw from a talented pool of five sophomores. **Alyssa Carlotta**, **Ashley Fallos**, **Beth Robbins**, and **Cassie Schott** return as letter winners from last season's squad that finished 24-14 while **Karla Mast** is new to the school as a transfer from Barry University.

Carlotta, a returning starter, garnered an all-conference honorable mention last season. The southpaw became quite a weapon for the Hounds as a freshman, registering 374 kills during her rookie campaign. Butera will look for her to continue her offensive attack in '06.



Fallos, another key player for the Greyhounds last season, may see action at multiple positions in 2006. Though she had 526 digs last year as the primary defensive specialist (second highest season total at UIndy), the versatile Fallos may be

asked to move to the outside as an attacker.

Schott, a Southport High School grad, will also bring her talents to the outside, providing depth and experience.

Robbins, last year's Kelso Reid Mental Attitude Award winner, looks to move into the starting role as the team's number one setter. Though she split time there last season, she managed an impressive total of 793 assists.

Mast is the third transferee to join the Hounds this year. After starring on the basketball squad for Barry University (Fla.), she looks to do the same for same Coach Butera on the volleyball court. She'll draw from her extensive volleyball experience in high school and at the club level.

Head Women's Basketball Coach Teri Moren also looks to utilize her athleticism as Mast will play hoops for Indianapolis this winter.

### The Freshmen

The promising freshmen crop looks to be quite the talented foursome. It includes **Jessica Breeden**, **Christy Fulk**, **Brandi McAllister**, and **Kyleigh Turner**.

All the "Greenhounds" bring impressive resumes from the prep and club levels, but the wild card in 2006 could be Breeden. She was named 2006 Suburban Female Athlete of the Year by The Indianapolis Star at nearby Martinsville High School. Butera hopes her athleticism translates well at the DII level.

"Jessica Breeden is one of the most athletic players that has come to Indianapolis," Butera said. "She comes from a very strong high school program where she was a standout volleyball, basketball, and softball player. Breeden is a fierce competitor that hates to lose and will bring much talent to

the program. Breeden is an all-around athlete and will give us depth in many positions."

Breeden will also star for Coach Missy Frost on the Greyhound softball team.

McAllister will compete for playing time at setter. Her ball control skills allowed her to set the career assists record at Elkhart Memorial High School. Though she is the cousin of former Greyhound volleyballer Shaun McAllister, the school's all-time kills leader, she intends to make a name of her own at Indianapolis.

Defensive specialist Turner will compete right away at the all-important Libero spot. Butera likes what Turner brings to the squad.

"Kyleigh Turner is an outstanding libero," Butera said. "Kyleigh's ball control and communication skills are what we need to win. Her ability to read the ball at the next level will prove as she competes for a starting role next year."



Fulk will walk-on to Coach Butera's squad as a middle blocker. She should provide height and depth to an already formidable Greyhound middle.

UIndy opens its season at the Christian Brothers Fall Classic where it will play four matches, the first of which against Ouachita Baptist on Aug. 25. The Hounds will play their first home match at 7:00 pm on Sep. 8 versus Bellarmine, part of the Greyhound Family Weekend. UIndy finished with an impressive 9-2 record at the Ruth Lilly Center last season.

In one of the more intriguing matches, Butera and her team will have a chance to avenge their loss in last year's conference final when they host SIU-Edwardsville on Saturday, Sep. 16. UIndy will also face the defending DII national champions, the Grand Valley State Lakers, on Sep. 1 as part of the Ashland Invitational in Ashland, Ohio.

# 2006 Roster

#	Name	Pos.	Ht.	Yr.	Hometown/High school/Previous School
1	Beth Robbins	S	5-9	So.	Cincinnati, Ohio/Seton H.S.
2	Brandi McAllister	S	5-9	Fr.	Elkhart, Ind./Memorial H.S.
3	Alyssa Carlotta	OPP	5-10	So.	Cincinnati, Ohio/Roger Bacon H.S.
5	Christy Fulk	MB	6-0	Fr.	Center Point, Ind./Northview H.S.
7	Cassie Schott	OH	5-10	So.	Southport, Ind.
8	Kyleigh Turner	Lib	5-5	Fr.	Muncie, Ind./Cowan H.S.
9	Lynne Ross	MB	6-0	Sr.	Connersville, Ind.
10	Elizabeth Shuyler	MB	6-0	Jr.	Selah, Wash./Walla Walla Community College
11	Casey Chrzastowski	OH	5-9	Jr.	Bloomington, Ind./North H.S./IUPUI
12	Karla Mast	OH	5-9	So.	New Buffalo, Ind./Barry University
18	Jessica Breeden	MH	5-10	Fr.	Martinsville, Ind.
19	Ashley Fallos	OH	5-7	So.	Gurnee, Ill./Warren Township H.S.
20	Eileen Patton	OPP	6-4	Sr.	Fairview Park, Ohio



## Roster by Class

Seniors	Eileen Patton Lynne Ross
Juniors	Casey Chrzastowski Elizabeth Shuyler
Sophomores	Alyssa Carlotta Ashley Fallos Karla Mast Beth Robbins Cassie Schott
Freshmen	Jessica Breeden Christy Fulk Brandi McAllister Kyleigh Turner

## What's back in 2006

Category	'05 Total	Lost	Returning	% Back
Kills	2140	1285	855	40.0%
Attacks	5869	3720	2149	36.6%
Assists	1900	1049	851	44.8%
Service aces	218	151	67	30.7%
Digs	2590	1542	1048	40.5%
Solo Blocks	85	48	37	43.5%
Block assists	573	355	218	38.0%



Eileen PATTON

20

OPP • 6-4 • SR.

FAIRVIEW PARK, OHIO



**2006:** Newcomer to the volleyball squad after earning three varsity letters in basketball.

**2005-06:** Saw action in all 27 games ... averaged 6.5 ppg and 4.3 rpg while averaging just 13 minutes per contest ... hit double-digits in points on six occasions ... amassed 31 blocks on the season, good for fourth in the GLVC ... shot over 50% from the field ... rejected 78 shots in just 70 career games ... opened season with a season-high 15 points and added 8 boards and 3 blocks in a win versus Wayne State (11/15/05) ... notched a double-double at Quincy going for 14 and 10, leading the team in both points and rebounds (1/5/06) ... swatted four shots while adding 12 points and six rebounds in a 22-point win versus Bellarmine (1/24/06) ... had 10 points and 8 boards in just 15 minutes played in finale versus Kentucky Wesleyan (2/23/06).

**2004-05:** Southpaw averaged 8.2 points and 3.7 rebounds per game including 10.1 ppg & 4.3 rpg in GLVC play ... scored a career-high 18 points at Quincy (1/6/05) ... led team in points per 40 minutes played with 25.7 ... started 2 of 25 games played and averaged 15 points, 6 boards and 4 blocks per start ... scored in double digits five straight games from 1/13-1/29/05 ... notched first career double-double with 10 points and 10 rebounds in just 22 minutes in a road win at SIU Edwardsville (1/29/05) ... led team in blocks with 37, including a career-best six versus SIU Edwardsville (2/24/05).

**2003-04:** Played in 18 games, logging 89 minutes ... saw key minutes in all three GLVC Tournament games ... made an impressive collegiate debut with four points (2-3 FG) and a rebound in three minutes against OCU (12/13/03) ... grabbed six defensive rebounds, blocked a game-high three shots, and scored two points in five minutes at Northwood (12/20/03) ... two rebounds and two blocks in season-high 12 minutes vs. Kentucky Wesleyan (1/31/04) ... scored six points on 3-5 field goal shooting at Missouri-St. Louis (2/5/04) ... missed first seven games due to injury.

**High School:** All-state special mention, all-district first-team, all-conference first team, and conference MVP for the Fairview Park basketball squad ... played in the Ohio East-West All-Star Game ... team MVP in both basketball and volleyball ... named the school's "Female Athlete of the Year" ... lettered twice in both basketball and volleyball.

**Personal:** P.E./sports administration major ... academic All-GLVC ... national president of the Student-Athlete Advisory Committee (SAAC) ... born 3/31/85.



## Lynne ROSS

9

MH • 6-0 • SR.

CONNERSVILLE, IND.



**2006:** Three-year letterwinner looks to lead the Greyhounds to postseason success as team captain.

**2005:** Garnered All-GLVC honorable mention as a junior ... registered at least one kill in all 114 career matches played ... improved hitting percentage every year ... three straight seasons with at least 100 total blocks ... blocked 154 attempts in 2005, tied for most in the GLVC ... can break UIndy career block record with 111 rejections in '06 (531 by Jennifer Suba, 1994-97) ... second on the squad with a .313 kill percentage en route to 368 kills on the season ... collected a career-high 10 total blocks in season opener vs. Christian Brothers (8/26), a feat later repeated against Northern Kentucky (10/29) ... blocked opponents' attacks in each of the first three matches, adding to an impressive streak started the previous year for a total of 29 straight matches with at least one block ... ran off a team-high 14 straight matches with eight or more kills (9/24-10/22), hitting at an efficient .341 clip during that span... tied a personal best by hitting .625 in a single match, good for 10 kills in a road win at Kentucky Wesleyan (10/8) ... notched a career-high 17 kills at Southern Indiana (11/5).

**2004:** Finished third on the team in kills as a sophomore (237) ... only Greyhound to reach triple digits in total blocks (100) ... rattled off five straight games of hitting at least .333 (9/11-9/24), raising kill percentage to a season-high .294 ... tallied 13 kills and a .571 kill percentage in a sweep over UMSL (10/1), both season highs.

**2003:** Collected a career-high 167 blocks as a freshman, good for second on the team ... became more of a focal point on the offense late in the season by attempting 7.2 attacks per match in the final ten matches, up from 4.3 per in the matches previous ... aced 31 serves on the season, including a personal-best five in a conference tournament victory over second-seeded SIU Edwardsville (11/14) ... registered 34 kills in the conference tourney for the GLVC champion Greyhounds ... spiked 15 kills in school's only NCAA II tournament appearance versus eventual national semi-finalist Grand Valley State (11/20).

**High School:** Earned nine varsity letters as prep - four in tennis, three in basketball and two in volleyball ... all-conference performer in all three sports ... named team MVP in basketball and volleyball in both junior and senior seasons ... named MVP of the East Central Indiana All-Star Basketball Team as a senior ... two-time sectional champ and one-time conference champ in tennis.

**Personal:** Exercise science major ... made honor roll multiple times as a Greyhound ... academic All-GLVC 2004-05 ... daughter of Doug and Beth Ross ... born 11/19/84.

### ROSS' Career Statistics

Year	GP/MP	K	K/G	E	TA	Pct	A	A/G	SA	SA/G	SE	RE	DIG	D/G	BS	BA	TB	B/G	BE
2003	159/40	304	1.91	102	809	.250	6	0.04	31	0.19	53	2	70	0.44	41	126	167	1.05	64
2004	116/36	237	2.04	79	617	.256	5	0.04	1	0.01	9	0	15	0.13	15	85	100	0.86	8
2005	149/38	368	2.47	101	852	.313	15	0.10	0	0.00	3	0	32	0.21	28	126	154	1.03	6
<b>Totals</b>	<b>424/114</b>	<b>909</b>	<b>2.14</b>	<b>282</b>	<b>2278</b>	<b>.275</b>	<b>26</b>	<b>0.06</b>	<b>32</b>	<b>0.08</b>	<b>65</b>	<b>2</b>	<b>117</b>	<b>0.28</b>	<b>84</b>	<b>337</b>	<b>421</b>	<b>0.99</b>	<b>78</b>

#### 2005 Season Highs

Kills	17 vs. Southern Indiana (11/5)
Attacks	41 vs. Winona State (9/3)
Percentage	.625 (10 K, 0 E, 16 Att) at Kentucky Wesleyan (10/8)
Assists	4 vs. St. Francis (8/30)
Aces	None
Digs	3 (three times) last vs. Southern Indiana (11/10)
Blocks	10 (twice) last vs. Northern Kentucky (10/29)

#### Career Highs

Same
42 vs. Missouri-St. Louis (10/25/03)
.625 (twice) last same
Same
5 vs. SIU Edwardsville (11/14/03)
7 vs. Nebraska-Omaha (8/31/03)
Same

**Casey CHRZASTOWSKI**

11

OH • 5-9 • JR.

BLOOMINGTON, IND./NORTH H.S./IUPUI



**2006:** Junior transfer from cross-town IUPUI brings D-I experience to the outside.

**2005:** Finished as IUPUI's all-time leader in attack attempts per game, averaging 11.28 per in two seasons ... represented the Jaguars number one offensive option, leading the squad with 444 kills on 1384 attempts ... also contributed 238 digs and 52 total blocks ... made the Mid-Continent Conference All-Tournament Team on the strength of 12th double-double of the season with 15 kills and 17 digs in an opening-round loss to eventual champs Valparaiso (11/19) ... earned Academic All-Conference accolades ... named a Collegiate All-American Scholar by the United States Achievement Academy.

**2004:** Dubbed Mid-Con Freshman of the Year ... garnered all-conference second-team honors ... tallied 460 finishes, fifth highest season total in school history ... finished third in the conference in both kills and kills per game ... ended seven matches with at least twenty kills and 14 matches with at least sixteen finishes ... killed a career-high 29 at Chicago State (10/30).

**High School:** Four-year letterwinner in volleyball, two-year in track ... twice an all-conference performer in volleyball ... named team MVP as a senior.

**Personal:** Majoring in exercise science ... named to the Dean's List at IUPUI ... graduated from Bloomington North H.S. as a member of the National Honor Society ... born 10/25/85.

**CHRZASTOWSKI'S Career Statistics (with IUPUI)**

Year	GP/MP	K	K/G	E	TA	Pct	A	A/G	SA	SA/G	SE	RE	DIG	D/G	BS	BA	TB	B/G	BE
2004	115/32	460	4.00	210	1311	.191	13	0.11	20	0.17	39	17	238	2.07	4	41	45	0.39	6
2005	123/31	444	3.61	246	1384	.142	34	0.28	16	0.13	32	41	275	2.24	7	45	52	0.42	11
<b>Totals</b>	<b>238/63</b>	<b>904</b>	<b>3.80</b>	<b>456</b>	<b>2695</b>	<b>.166</b>	<b>47</b>	<b>0.20</b>	<b>36</b>	<b>0.15</b>	<b>71</b>	<b>58</b>	<b>513</b>	<b>2.16</b>	<b>11</b>	<b>96</b>	<b>97</b>	<b>0.41</b>	<b>17</b>

**2005 Season Highs**

Kills 25 at Oakland (9/30)  
 Attacks 65 versus Oral Roberts (10/7)  
 Percentage .439 (22 K, 4 E, 41 Att) at Centenary (11/4)  
 Assists 3 (twice) last versus Western Illinois  
 Aces 2 (three times) last versus Valparaiso (10/28)  
 Digs 17 (three times) last at Valparaiso (11/19)  
 Blocks 4 (four times) last versus Missouri-Kansas City (11/12)

**Career Highs**

29 at Chicago State (10/30/04)  
 89 at Chicago State (10/30/04)  
 Same  
 Same  
 Same  
 17 (five times) last same  
 5 (twice) last vs. Valparaiso (11/6/04)

## Elizabeth SHUYLER

10

MB • 6-0 • JR.

SELAH, WASH./WALLA WALLA CC



**2006:** Six-foot transfer from Walla Walla Community College will contribute right away at middle blocker.

**2005:** Starter on squad WWCC that compiled a 36-4 record, including 21 straight victories to finish the season ... team won the Northwest Athletic Association of Community Colleges championship ... hit .309 with 350 kills and 178 blocks in 134 games ... named to the all-tournament teams at the Spokane Invitational, Linn-Benton Tourney and the NWAACC Championships ... two-time NWAACC Eastern Region "Player of the Week" ... dubbed first team Eastern Division All-Star by the NWAACC and 2nd Team Junior College All-American by the AVCA ... registered a career high 19 kills in a win over Clackamas (9/9) ... set school record with 16 total blocks versus Whatcom (9/10) ... recorded 14 kills, five blocks and a season-high seven digs in a win over Linn-Benton (11/5) ... notched a double-double with 14 kills and 11 blocks in a NWAACC tournament win over Linn-Benton (11/18) .

**2004:** Saw action in 10 games at Seattle Pacific University ... finished with three kills, two assists, one dig and one block.

**2003:** Redshirted ... earned Most Improved Player Award.

**High School:** Garnered 2nd team all-league honors as a senior ... named "Most Improved Player" in 2002 ... broke five all-time blocking records.

**Personal:** Secondary education/ history major ... twice named to the President's List for student athletes at WWCC ... gained membership to the National Honors Society and graduated in the top 10% of the class of '03 at Selah HS ... class treasurer for three years as a prep.

### SHUYLER'S Career Statistics (with Walla Walla in '05, Seattle Pacific in '04)

Year	GP/MP	K	K/G	E	TA	Pct	A	A/G	SA	SA/G	SE	RE	DIG	D/G	BS	BA	TB	B/G	BE
2004	10/7	3	0.30	2	8	.152	2	0.20	0	0.00	1	0	1	0.10	0	1	1	0.10	0
2005	134/39	350	2.61	120	767	.309	4	0.03	6	0.04	2		22	0.16	61	117	178	1.33	
<b>Totals</b>	<b>144/47</b>	<b>353</b>	<b>2.45</b>	<b>122</b>	<b>775</b>	<b>.298</b>	<b>6</b>	<b>0.04</b>	<b>6</b>	<b>0.04</b>			<b>23</b>	<b>0.16</b>	<b>61</b>	<b>118</b>	<b>179</b>	<b>1.24</b>	

#### 2005 Season Highs

Kills	19 versus Clackamas (9/9)
Attacks	37 versus Clackamas (9/9)
Percentage	.900 (9 K, 0 E, 10 Att) versus Grays Harbor (9/9)
Assists	1 (four times) last versus Walla Walla College (10/24)
Aces	3 versus Grays Harbor (9/9)
Digs	7 versus Linn-Benton (11/5)
Blocks	16 versus Whatcom (9/10)

#### Career Highs

Same as '05

**Alyssa CARLOTTA**

3

OPP ■ 5-10 ■ SO.

CINCINNATI, OHIO/ROGER BACON H.S.



**2006:** Sophomore opposite hitter looks to build on a big rookie season.  
**2005:** Earned all-conference honorable mention accolades as a freshman ... ranked second on squad in kills and third in hitting percentage with 374 and .281, respectively ... assisted on 69 blocks, 73 total ... hit over .400 in twelve matches ... totaled a team-high 60 kills in the Wheeling Jesuit Tournament, hitting .427 as the Hounds took 3-of-4 matches (9/30 & 10/1) ... recorded a season-best eight blocks in a three-game sweep of Drury (10/14) ... tied a team season-high with 21 kills and hit .425 in a win over No. 1 seed Rockhurst in the GLVC tourney (11/11) ... added six blocks and four digs in that game.  
**High School:** Standout volleyball player at Roger Bacon H.S. in Cincinnati, Ohio ... earned all-city honors twice, including a first team nod as a senior ... part of state championship team in final season ... played on the club squad "Team Z" with fellow Greyhound Beth Robbins that placed 11th at nationals.  
**Personal:** Made the honor roll as a prep ... born 6/13/87.

**CARLOTTA'S Career Statistics**

Year	GP/MP	K	K/G	E	TA	Pct	A	A/G	SA	SA/G	SE	RE	DIG	D/G	BS	BA	TB	B/G	BE
2005	138/38	374	2.71	122	897	.281	25	0.18	7	0.05	15	1	93	0.67	4	69	73	0.53	10
<b>Totals</b>	<b>138/38</b>	<b>374</b>	<b>2.71</b>	<b>122</b>	<b>897</b>	<b>.281</b>	<b>25</b>	<b>0.18</b>	<b>7</b>	<b>0.05</b>	<b>15</b>	<b>1</b>	<b>93</b>	<b>0.67</b>	<b>4</b>	<b>69</b>	<b>73</b>	<b>0.53</b>	<b>10</b>

**2005 Season Highs**

Kills 21 at Rockhurst (11/11)  
 Attacks 40 (twice) last at Rockhurst (11/11)  
 Percentage .607 (18 K, 2 E, 40 Att) at Wheeling Jesuit (9/30)  
 Assists 3 (twice) last vs. Lewis (10/11)  
 Aces 3 vs. St. Francis (8/30)  
 Digs 8 vs. Minnesota St.-Mankato (9/2)  
 Blocks 8 vs. Drury (10/14)

**Career Highs**

Same as '05



**Ashley FALLOS**

19

OH ■ 5-7 ■ SO.

CURNEE, ILL./WARREN TOWNSHIP H.S.



**2006:** Versatile player expected to move to outside hitter after spending the majority of last season at defensive specialist as a freshman.  
**2005:** Led team with 526 digs, second highest season total in Greyhound history ... shoveled at least 20 digs in eleven matches ... recorded 97 digs in four matches at the Lewis University Flyer Festival, including setting a Greyhound record with 31 digs in a 4-game match versus Minnesota St-Mankato (9/2) ... finished the season on a 12-match streak of reaching double-digits in digs, including 29 scoops in a GLVC tournament win over USI (11/10).  
**High School:** Received three varsity letters in volleyball ... named all-conference, all-area and all-county as both a junior and a senior ... named Gatorade Player of the Year in senior campaign ... played at the club level with Sky High - 18 Black.  
**Personal:** Biology major ... graduated from Warren Township H.S. in 2005 after being named to the Dean's high honor roll all four years ... named an Illinois State Scholar as a prep ... born 5/6/87.

**FALLOS' Career Statistics**

Year	GP/MP	K	K/G	E	TA	Pct	A	A/G	SA	SA/G	SE	RE	DIG	D/G	BS	BA	TB	B/G	BE
2005	131/38	18	0.14	8	77	.139	13	0.10	23	0.18	33	48	526	4.02	0	2	2	0.02	0
<b>Totals</b>	<b>131/38</b>	<b>18</b>	<b>0.14</b>	<b>8</b>	<b>77</b>	<b>.139</b>	<b>13</b>	<b>0.10</b>	<b>23</b>	<b>0.18</b>	<b>33</b>	<b>48</b>	<b>526</b>	<b>4.02</b>	<b>0</b>	<b>2</b>	<b>2</b>	<b>0.02</b>	<b>0</b>

**2005 Season Highs**

Kills 2 (four times) last at Lewis (10/21)  
 Attacks 19 at Alderson Broadus (10/1)  
 Percentage 1.000 (four times) last (1 K, 0 E, 1 Att) at SIU-Edwardsville (11/4)  
 Assists 3 at West Florida (8/26)  
 Aces 3 vs. Winona State (9/3)  
 Digs 31 vs. Minnesota St. Mankato (9/2)  
 Blocks 2 at Alderson Broadus (10/1)

**Career Highs**

Same as '05



## Karla MAST

12

OH • 5-9 • SO.

NEW BUFFALO, MICH./BARRY UNIVERSITY



**2006:** Athletic southpaw will fit into the Greyhound roster at outside hitter after transferring from Barry University (Fla.) ... will also play hoops for UIndy under Head Coach Teri Moren.

**2004-05:** Sophomore earned second team MVP honors at Barry by averaging 11.4 ppg, 6.8 rpg, 3.9 apg and 2.6 steals per game on the hardwood ... lead team in rebounds, assists and blocks ... shot 49% (44-for-90) from behind the arc and 86% (69-for-80) from the line, both team highs ... collected two triple-doubles on the season ... tied career-high with 27 points versus Florida Tech, including a perfect 12-for-12 from the line (1/19/05) ... blocked a team season-high six shots versus Florida Memorial (12/2/04) ... garnered all-conference first team and all-region second team honors.

**2003-04:** named team MVP as a freshman by leading the team in points and offensive boards ... only Buccaneer to start all 28 games ... scored twenty points in a game three times, including a 27-point effort versus Lynn (1/6/04) ... had a career-high seven steals against Florida Southern (1/10/04) ... named Sunshine State Conference "Freshman of the Year" and garnered second team all-conference recognition.

**High School:** Earned an impressive 13 varsity letters - four each in volleyball, basketball and softball and one in track ... compiled 1327 kills, 287 blocks and 859 digs in final three years as a prep ... 1st team all-state in both basketball and volleyball in junior and senior years as well as softball in senior year ... four-year team MVP for the basketball and volleyball squads ... holds school records in basketball with 1370 points scored and 452 steals, along with the school mark in high jump at 5'4" ... played club volleyball and AAU basketball ... finalist for the Wendy's High School Heisman.

**Personal:** Sports management major ... member of the National Honor Society and Spanish Honor Society at New Buffalo High School ... born 1/7/85.



## Beth ROBBINS

1

S • 5-9 • SO.

CINCINNATI, OHIO/SETON H.S.



**2006:** Sophomore setter looks to fill starter's role.

**2005:** Presented the Kelso Reid Mental Attitude Award ... made the most of part-time action by assisting on 793 kills as a freshman, good for the tenth-highest season total in team history ... tallied 267 digs on the season ... slammed 28 service aces, good for third on the squad ... surpassed 40 assists in three of four matches from 9/2-9/10 ... had a career day in a win over Winona State (9/3), setting personal bests in both assists (48) and blocks (5) while adding 14 digs ... had at least 10 digs in all four matches at the Wheeling Jesuit Tournament (9/30 & 10/1), capped by a season-high 18 versus Indiana (Pa.) ... aced four serves in a sweep over Bellarmine (10/28) ... assisted on 35 points and dug up 17 would-be kills in a win over No. 1 seed Rockhurst in the GLVC tourney (11/11).

**High School:** Three-time volleyball letter winner at Seton H.S in Cincinnati, Ohio ... dubbed second team all-city and all-league as an upperclassman ... earned the coach's Award for Leadership as a senior ... played on the club squad "Team Z" with fellow Greyhound Alyssa Carlotta that placed 11th at nationals.

**Personal:** Radiology major ... earned first academic honors all four years as a prep ... also a member of the National Honor Society ... born 11/10/86.

### ROBBINS' Career Statistics

Year	GP/MP	K	K/G	E	TA	Pct	A	A/G	SA	SA/G	SE	RE	DIG	D/G	BS	BA	TB	B/G	BE
2005	129/37	30	0.23	14	109	.147	793	6.15	28	0.22	36	2	267	2.07	5	12	17	0.13	2
<b>Totals</b>	<b>129/37</b>	<b>30</b>	<b>0.23</b>	<b>14</b>	<b>109</b>	<b>.147</b>	<b>793</b>	<b>6.15</b>	<b>28</b>	<b>0.22</b>	<b>36</b>	<b>2</b>	<b>267</b>	<b>2.07</b>	<b>5</b>	<b>12</b>	<b>17</b>	<b>0.13</b>	<b>2</b>

#### 2005 Season Highs

Kills	5 vs. Winona State (9/3)
Attacks	12 vs. Winona State (9/3)
Percentage	1.000 (four times) last (1 K, 0 E, 1 Att) at St. Joseph's (10/25)
Assists	48 vs. Winona State (9/3)
Aces	4 vs. Bellarmine (10/28)
Digs	18 vs. Indiana-Pa. (10/1)
Blocks	5 vs. Winona State (9/3)

#### Career Highs

Same as '05



Cassie SCHOTT

7

OH • 5-10 • SO.

SOUTHPORT, IND.



**2006:** Outside hitter looks to see more time after a solid freshman campaign.

**2005:** Played in 93 games, finishing the season with 65 kills, 130 digs and 9 service aces ... killed six balls on just 11 attempts in a sweep over Arkansas-Monticello (8/27) ... had first of three double-digit dig matches with 10 versus Minnesota St.-Mankato (9/2) ... played a career match in a win at Marian (9/19), setting personal bests in kills (8), total attempts (21) and digs (15) ... set a team season-high with the highest kill total in a flawless hitting match, killing a perfect four balls in four attempts in a victory over St. Joseph's (9/27) ... contributed across the board in a "W" over Kentucky Wesleyan (10/8), totaling eight kills, eight digs and four block assists ... picked up 45 attack attempts in three GLVC tournament matches.

**High School:** Southport H.S. grad lettered four times in volleyball and once in track ... two-time all-conference volleyballer ... team captain and MVP as a senior ... school record holder in both kills in a match (19) and kills in a season (222) ... played for the Circle City Volleyball Club for nine years.

**Personal:** Business/accounting major ... graduated in the top 5% of her high school class ... member of the honor roll and National Honor Society as a prep ... daughter of Kevin and Jean Schott ... born 10/30/86.

SCHOTT'S Career Statistics

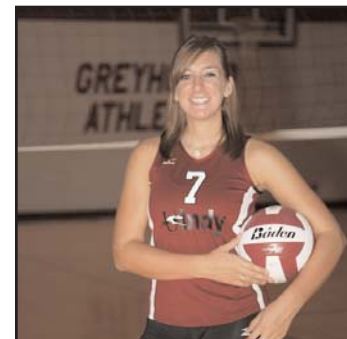
Year	GP/MP	K	K/G	E	TA	Pct	A	A/G	SA	SA/G	SE	RE	DIG	D/G	BS	BA	TB	B/G	BE
2005	93/35	65	0.70	34	213	.146	5	0.05	9	0.10	11	18	130	1.49	0	9	9	0.10	0
<b>Totals</b>	<b>93/35</b>	<b>65</b>	<b>0.70</b>	<b>34</b>	<b>213</b>	<b>.146</b>	<b>5</b>	<b>0.05</b>	<b>9</b>	<b>0.10</b>	<b>11</b>	<b>18</b>	<b>130</b>	<b>1.49</b>	<b>0</b>	<b>9</b>	<b>9</b>	<b>0.10</b>	<b>0</b>

2005 Season Highs

- Kills 8 (twice) last at Kentucky Wesleyan (10/8)
- Attacks 21 at Marian (9/19)
- Percentage 1.000 (4 K, 0 E, 4 Att) vs. St. Joseph's (9/27)
- Assists 1 (five times) last vs. SIU-Edwardsville (11/12)
- Aces 2 (twice) last at SIU-Edwardsville (11/4)
- Digs 15 at Marian (9/19)
- Blocks 4 at Kentucky Wesleyan (10/8)

Career Highs

Same as '05



Jessica BREEDEN

18

MH • 5-10 • FR.

MARTINSVILLE, IND.



**2006:** Martinsville product is listed at middle blocker but could contribute at multiple positions ... will also star for Head Coach Frost on the softball diamond.

**High School:** Collected twelve varsity letters in volleyball, softball and basketball ... all-state performer in all three sports ... played on three state championship teams ... senior captain led volleyball team to a state title while pacing the squad in kills (399) ... three-time all-metro in VB ... named Hoosier Diamond "Junior of the Year" and second team all-state as a junior softballer ... 2006 IHSAA Miss Softball ... drove in the winning run in both the 2005 and 2006 state championship games ... made the Indiana All-Star basketball team and named to the *Indianapolis Star* Super Team in senior campaign ... *Indianapolis Star* 2006 Suburban Female Athlete of the Year.

**Personal:** Plans to major in pre-medicine ... 4-year member of the honor roll at Martinsville HS ... daughter of Mike and Sharon Breeden ... born 1/28/88.

Christy FULK

5

MB • 6-0 • FR.

CENTER POINT, IND./NORTHVIEW H.S.



**2006:** Six-foot walk-on from Center Point will add size and depth to the Greyhound middle.

**High School:** Earned five varsity letters - three in volleyball, two in basketball ... three time all-conference selection in VB... led team to a conference championship as both a junior and a senior ... holds school record for career kills and blocks ... played for the Terre Haute club team "Crossroads of America" from 2002-'06.

**Personal:** Will major in graphic design ... earned an academic honors diploma from Northview High School ... graduated in the top 10% of her class ... born 10/27/87.

## Brandi McALLISTER

2



S • 5-9 • FR.

ELKHART, IND./MEMORIAL H.S.

**2006:** Freshman setter will compete for assists in the Greyhound offensive.

**High School:** Starred for both the volleyball and track teams ... led V-Ball squad to three-straight Northern Lakes Conference titles ... three-time all-conference performer earned all-state honors as a senior ... broke own season assist record by racking up 1050 helpers as a junior ... Memorial's all-time assists leader (2474) ... Indiana All Star Team MVP ... Kiwanis "Athlete of the Month" ... two-time track team captain helped win sectional championship in the 4 x 100m relay as a freshman.

**Personal:** Plans to major in nursing ... made Principal's Honor Roll all four years at Elkhart Memorial and was a member of the National Honor Society ... cousin of Greyhound all-time kills leader Shaun McAllister (2025, 2001-04) ... born 8/28/87.

## Kyleigh TURNER

8



L • 5-5 • FR.

MUNCIE, IND./COWAN H.S.

**2006:** Freshman defensive specialist could see ample time at libero.

**High School:** Eleven varsity letters, four apiece in track and basketball and three in volleyball ... member of three state semi-final volleyball squads ... named first team all-county, all-conference and all-state as a senior ... 2005 Indiana All Star Volleyball Team member ... honored with all-tourney recognition at both the Blackhawk Volleyball Invitational and the Class A Showdown as an upperclassman ... tallied 1474 digs as a prep ... four-year member of Munciana club volleyball team that went 66-7 and competed at Nationals three times during that span ... twice named to All-Mid Eastern Conference first team and three times first team All-Delaware County as a hoopster ... team MVP four straight years ... Academic All-State in both volleyball and basketball ... two-time member of MEC champion 4 x 400m relay team.

**Personal:** Will major in secondary education/ math ... National Honor Society member at Muncie's Cowan High School ... winner of the American Legion Samsung Hoosier Girls State Scholarship ... born 3/21/88.

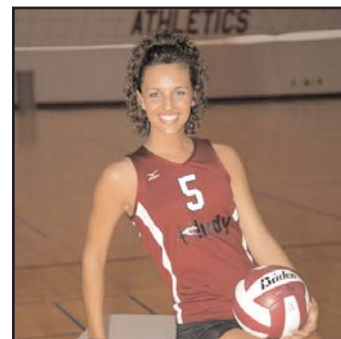
Jessica Breeden



Brandi McAllister



Kyleigh Turner



Christy Fuik

# 2005 UNIVERSITY OF INDIANAPOLIS RESULTS

RECORD: 24-14 GLVC: 11-5 HOME: 9-2 AWAY: 8-6 NEUTRAL: 7-6

Date	Opponent	Result	Scores	Record	Overall Record	GLVC
08/26	vs Christian Brothers %	W	3-2	30-17, 30-22, 29-31, 30-32, 15-9	1-0	
08/26	at West Florida %	L	1-3	30-32, 32-30, 27-30, 25-30	1-1	
08/27	vs #15 Florida Southern %	L	0-3	18-30, 24-30, 29-31	1-2	
08/27	vs Arkansas-Monticello %	W	3-0	30-19, 30-21, 30-15	2-2	
08/30	ST. FRANCIS	W	3-0	30-23, 30-26, 30-13	3-2	
09/02	vs Saint Leo #	W	3-1	30-27, 30-17, 27-30, 30-25	4-2	
09/02	vs Minn. St-Mankato #	L	1-3	28-30, 29-31, 30-28, 20-30	4-3	
09/03	vs Michigan Tech #	L	2-3	30-23, 31-33, 30-21, 30-32, 14-16	4-4	
09/03	vs Winona State #	W	3-1	30-19, 26-30, 30-28, 30-27	5-4	
09/10	vs Lake Superior State @	W	3-0	31-29, 30-24, 30-22	6-4	
09/10	at Ashland @	L	0-3	30-32, 22-30, 28-30	6-5	
09/09	vs #12 Grand Valley State @	L	0-3	20-30, 19-30, 27-30	6-6	
09/16	at Northern Kentucky *	L	2-3	24-30, 28-30, 31-29, 31-29, 13-15	6-7	0-1
09/17	at Bellarmine *	L	2-3	30-21, 23-30, 30-21, 28-30, 8-15	6-8	0-2
09/19	at Marian	W	3-1	30-18, 27-30, 30-16, 30-25	7-8	
09/23	QUINCY *	W	3-0	30-25, 30-24, 30-20	8-8	1-2
09/24	MISSOURI-ST. LOUIS *	W	3-0	30-19, 30-28, 30-20	9-8	2-2
09/27	SAINT JOSEPH'S *	W	3-1	30-20, 26-30, 30-25, 30-22	10-8	3-2
09/30	vs California (Pa.) \$	L	2-3	30-23, 30-21, 27-30, 15-30, 14-16	10-9	
09/30	at Wheeling Jesuit \$	W	3-1	25-30, 30-26, 30-21, 30-28	11-9	
10/01	at Alderson Broadus \$	W	3-0	30-15, 30-18, 30-17	12-9	
10/01	vs Indiana (Pa.) \$	W	3-1	23-30, 30-25, 30-27, 30-23	13-9	
10/04	FINDLAY *	L	1-3	25-30, 24-30, 30-27, 25-30	13-10	
10/07	INDIANA WESLEYAN *	W	3-1	27-30, 30-19, 30-15, 30-26	14-10	
10/08	at Kentucky Wesleyan *	W	3-0	30-24, 30-19, 30-12	15-10	4-2
10/11	LEWIS *	W	3-2	30-24, 18-30, 30-15, 20-30, 15-9	16-10	5-2
10/14	DRURY *	W	3-0	30-16, 30-26, 30-21	17-10	6-2
10/15	ROCKHURST *	L	2-3	17-30, 21-30, 34-32, 30-26, 10-15	17-11	6-3
10/21	at Lewis *	W	3-2	30-28, 17-30, 24-30, 30-19, 15-11	18-11	7-3
10/22	at UW-Parkside *	W	3-1	30-20, 28-30, 30-21, 30-27	19-11	8-3
10/25	at Saint Joseph's *	W	3-0	30-23, 30-27, 30-24	20-11	9-3
10/28	BELLARMINE *	W	3-0	30-26, 30-20, 30-23	21-11	10-3
10/29	NORTHERN KENTUCKY *	W	3-1	30-27, 30-20, 20-30, 30-19	22-11	11-3
11/04	at SIU Edwardsville *	L	2-3	27-30, 30-20, 33-31, 20-30, 15-17	22-12	11-4
11/05	at Southern Indiana	L	2-3	30-18, 24-30, 30-20, 19-30, 22-24	22-13	11-5
11/10	vs Southern Indiana ^	W	3-1	26-30, 32-30, 30-21, 31-29	23-13	
11/11	at Rockhurst ^	W	3-2	25-30, 30-22, 24-30, 30-28, 15-8	24-13	
11/12	vs SIU Edwardsville ^	L	1-3	21-30, 30-25, 18-30, 21-30	24-14	

% - West Florida Comfort Inn-vitational (Pensacola, Fla.)

# - Flyer Festival (Romeoville, Ill.)

@ - Ashland Invitational (Ashland, Ohio)

\* - GLVC contest

^ - GLVC Tournament match (Kansas City, Mo.)

Home matches in ALL CAPS

## 2005 INDIVIDUAL STATISTICS

RECORD: 24-14 GLVC: 11-5 HOME: 9-2 AWAY: 8-6 NEUTRAL: 7-6

##	Player	G	MP-MS	K	K/Gm	E	TA	Pct	A	A/Gm	SA	SA/Gm	SE	RE	DIG	DIG/Gm	BS	BA	Total	B/Gm	BE	BHE
1	Beth Robbins	129	37-4	30	0.23	14	109	.147	793	6.15	28	0.22	36	2	267	2.07	5	12	17	0.13	2	20
3	Lindsay Duncan	84	27-0	3	0.04	6	26	-.115	7	0.08	9	0.11	7	13	131	1.56	0	0	0	0.00	0	3
4	Kristin Lay	80	25-0	1	0.01	1	7	.000	9	0.11	23	0.29	21	40	298	3.72	0	0	0	0.00	0	0
5	Emeral Holladay	127	36-16	312	2.46	81	705	.328	12	0.09	8	0.06	22	0	73	0.57	26	128	154	1.21	7	2
6	Emily Huey	128	32-16	28	0.22	19	95	.095	939	7.34	32	0.25	41	2	214	1.67	2	17	19	0.15	4	22
7	Cassie Schott	93	35-1	65	0.70	34	213	.146	5	0.05	0	0.10	11	18	130	1.40	0	9	9	0.10	0	0
8	Lisa Schulfer	138	37-7	185	1.34	50	559	.242	40	0.29	14	0.10	11	0	85	0.62	7	106	113	0.82	14	4
9	Lynne Ross	149	38-21	368	2.47	101	852	.313	15	0.10	0	0.00	3	0	32	0.21	28	126	154	1.03	6	2
11	Whitney Boling	145	37-20	412	2.84	120	1247	.234	21	0.14	25	0.17	52	50	378	2.61	10	58	68	0.47	3	1
12	Bethany Dulle	145	38-20	340	2.34	137	1062	.191	15	0.10	38	0.26	12	33	349	2.41	2	44	46	0.32	2	2
13	Alyssa Carlotta	138	38-16	374	2.71	122	897	.281	25	0.18	7	0.05	15	1	93	0.67	4	69	73	0.53	10	1
17	Katie Olson	10	7-0	0	0.00	0	1	.000	1	0.10	0	0.00	0	3	7	0.70	0	0	0	0.00	0	0
19	Ashley Fallos	131	38-0	18	0.14	8	77	.130	13	0.10	23	0.18	33	48	526	4.02	0	2	2	0.02	0	3
20	Amy Schmitz	5	4-1	4	0.80	3	18	.056	5	1.00	2	0.40	0	0	7	1.40	1	2	3	0.60	0	0
	TEAM													41								
	UIndy	150	38-38	2140	14.27	696	5869	.246	1900	12.67	218	1.45	264	251	2590	17.27	85	573	658	2.48	48	60
	Opponents	150	38-38	2005	13.37	1000	5750	.175	1809	12.06	249	1.66	283	208	2317	15.45	81	347	438	1.70	31	65

## 2005 GLVC FINAL STANDINGS

Team	GLVC			Region			Overall		
	W	L	Pct.	W	L	Pct.	W	L	Pct.
Rockhurst	15	1	.938	22	3	.880	29	7	.806
SIU Edwardsville	14	2	.875	21	3	.875	28	6	.824
Northern Kentucky	12	4	.750	17	4	.810	26	7	.788
Southern Indiana	11	5	.688	14	6	.700	19	13	.594
<b>Indianapolis</b>	<b>11</b>	<b>5</b>	<b>.688</b>	<b>16</b>	<b>10</b>	<b>.615</b>	<b>24</b>	<b>14</b>	<b>.632</b>
Lewis	9	7	.563	11	12	.578	17	13	.567
Drury	8	8	.500	9	10	.474	12	18	.400
Bellarmine	8	8	.500	9	12	.429	16	14	.533
Missouri-St. Louis	6	10	.375	6	10	.375	6	22	.214
UW-Parkside	4	12	.250	5	15	.250	6	25	.194
Saint Joseph's	4	12	.250	6	14	.300	10	22	.313
Quincy	2	14	.125	2	14	.125	4	20	.167
Kentucky Wesleyan	0	16	.000	1	16	.059	2	24	.077

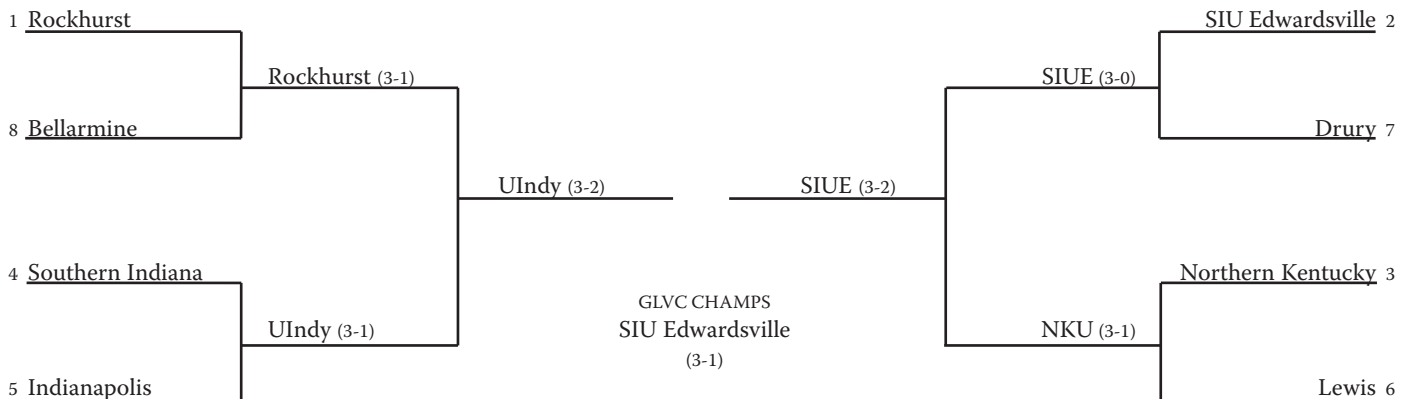
## 2005 GLVC TEAM STATISTICS

Percentage					Assists					Blocks					
G	K	E	TA	Pct.	G	A	/Gm	G	BS	BA	TB	/Gm			
Rockhurst	123	1962	648	5310	.247	Rockhurst	123	1833	14.90	SIU Edwardsville	121	67	508	321.0	2.65
<b>Indianapolis</b>	<b>150</b>	<b>2140</b>	<b>696</b>	<b>5869</b>	<b>.246</b>	SIU Edwardsville	121	1755	14.50	<b>Indianapolis</b>	<b>150</b>	<b>85</b>	<b>573</b>	<b>371.5</b>	<b>2.48</b>
Northern Kentucky	122	1872	740	4624	.245	Northern Kentucky	122	1669	13.68	Rockhurst	123	87	426	300.0	2.44
SIU Edwardsville	121	1938	711	5019	.244	Southern Indiana	117	1546	13.21	Lewis	111	64	408	268.0	2.41
Southern Indiana	117	1742	737	4718	.213	Bellarmine	110	1401	12.74	Southern Indiana	117	63	434	280.0	2.39
Bellarmine	110	1532	684	4314	.197	<b>Indianapolis</b>	<b>150</b>	<b>1900</b>	<b>12.67</b>	Saint Joseph's	114	104	313	260.5	2.29
Lewis	111	1570	670	4587	.196	Lewis	111	1384	12.47	Drury	105	65	328	229.0	2.18
UW-Parkside	115	1557	694	4591	.188	Drury	105	1237	11.78	UW-Parkside	115	64	289	208.5	1.81
Drury	105	1378	652	4559	.159	UW-Parkside	115	1350	11.74	Missouri-St. Louis	97	47	203	148.5	1.53
Saint Joseph's	114	1323	708	4063	.151	Missouri-St. Louis	97	1032	10.64	Bellarmine	110	103	122	164.0	1.49
Missouri-St. Louis	97	1140	680	4022	.114	Quincy	84	878	10.45	Northern Kentucky	122	44	273	180.5	1.48
Quincy	84	968	606	3430	.106	Saint Joseph's	114	1150	10.09	Quincy	84	30	176	118.0	1.40
Kentucky Wesleyan	87	832	587	3168	.077	Kentucky Wesleyan	87	726	8.34	Kentucky Wesleyan	87	30	130	95.0	1.09

Opponent %					Service Aces					Digs				
G	K	E	TA	Pct.	G	SA	/Gm	G	Digs	/Game				
SIU Edwardsville	121	1421	787	4727	.134	Northern Kentucky	122	344	2.82	Drury	105	2029	19.32	
Rockhurst	123	1687	841	5550	.152	Bellarmine	110	229	2.08	Rockhurst	123	2358	19.17	
Lewis	111	1517	782	4638	.158	SIU Edwardsville	121	240	1.98	Lewis	111	1931	17.40	
Northern Kentucky	122	1560	795	4719	.162	Southern Indiana	117	222	1.90	SIU Edwardsville	121	2104	17.39	
<b>Indianapolis</b>	<b>150</b>	<b>2005</b>	<b>1000</b>	<b>5750</b>	<b>.175</b>	Saint Joseph's	114	215	1.89	Southern Indiana	117	2023	17.29	
Southern Indiana	117	1595	721	4741	.184	Quincy	84	140	1.67	<b>Indianapolis</b>	<b>150</b>	<b>2590</b>	<b>17.27</b>	
Bellarmine	110	1352	604	4054	.185	Missouri-St. Louis	97	161	1.66	UW-Parkside	115	1964	17.08	
Drury	105	1663	705	4732	.202	Rockhurst	123	201	1.63	Saint Joseph's	114	1912	16.77	
UW-Parkside	115	1541	576	4380	.220	Lewis	111	179	1.61	Missouri-St. Louis	97	1622	16.72	
Quincy	84	1144	438	3132	.225	<b>Indianapolis</b>	<b>150</b>	<b>218</b>	<b>1.45</b>	Northern Kentucky	122	2030	16.64	
Missouri-St. Louis	97	1431	552	3880	.227	Drury	105	152	1.45	Bellarmine	110	1752	15.93	
Saint Joseph's	114	1146	381	3181	.240	Kentucky Wesleyan	87	122	1.40	Quincy	84	1294	15.40	
Kentucky Wesleyan	87	986	324	2210	.300	UW-Parkside	115	131	1.14	Kentucky Wesleyan	87	1046	12.02	

## 2005 GLVC TOURNAMENT RESULTS



## 2005 GLVC INDIVIDUAL LEADERS - ALL MATCHES

		<i>Minimum 3.0 attacks per game</i>																			
<b>Percentage</b>		CI	G	K	E	TA	Pct.	<b>Assists</b>		CI	G	A	/Gm	<b>Blocks</b>		CI	G	BS	BA	TB	/Gm
Holmes, Liz	NKU	So	122	471	137	951	.351	Jennings, Kecia	RU	Sr	120	1538	12.82	Fowler, Rachel	RU	So	108	40	98	138	1.28
Bonde, Heather	SIUE	Sr	115	445	120	971	.335	Lanham, Andrea	NKU	Jr	111	1344	12.11	Lisle, Rebecca	LU	So	102	15	112	127	1.25
Jones, Lindsey	UWP	Sr	116	438	116	982	.328	Wilson, Stephanie	USI	So	117	1407	12.03	<b>Holladay, Emeral</b>	<b>UIndy Jr</b>	<b>127</b>	<b>26</b>	<b>128</b>	<b>154</b>	<b>1.21</b>	
<b>Holladay, Emeral</b>	<b>UIndy Jr</b>	<b>127</b>	<b>312</b>	<b>81</b>	<b>705</b>	<b>.328</b>	Majernik, Krystal	SIUE	Sr	113	1184	10.48	Talsma, Tina	SIUE	Sr	115	23	109	132	1.15	
Eisenmenger, Kristina	NKU	Fr	117	375	110	815	.325	Harmon, Marisa	BU	Fr	106	1106	10.43	Ellerbusch, Laura	USI	Sr	117	25	106	131	1.12
<b>Ross, Lynne</b>	<b>UIndy Jr</b>	<b>149</b>	<b>368</b>	<b>101</b>	<b>852</b>	<b>.313</b>	Brinker, Lisa	UMSL	Fr	97	955	9.85	Bonde, Heather	SIUE	Sr	115	14	113	127	1.10	
Fowler, Rachel	RU	So	108	331	97	767	.305	Vycital, Ashley	UWP	Jr	83	792	9.54	Figiel, Shelley	SJC	Sr	79	28	58	86	1.09
Schroff, Karla	RU	Sr	121	413	120	988	.297	Thoreson, Tedi	DU	Jr	105	931	8.87	<b>Ross, Lynne</b>	<b>UIndy Jr</b>	<b>149</b>	<b>28</b>	<b>126</b>	<b>154</b>	<b>1.03</b>	
Talsma, Tina	SIUE	Sr	115	325	86	814	.294	Morrone, Andrea	LU	So	103	860	8.35	Burns, Jessica	DU	So	84	12	72	84	1.00
<b>Carlotta, Alyssa</b>	<b>UIndy Fr</b>	<b>138</b>	<b>374</b>	<b>122</b>	<b>897</b>	<b>.281</b>	Kristin Harris	QU	Fr	84	617	7.35	Rahman, Molly	USI	So	117	13	104	117	1.00	

<b>Kills/Game</b>		CI	G	K	/Gm	<b>Service Aces</b>		CI	G	SA	/Gm	<b>Digs</b>		CI	G	Digs	/Gm
Bonde, Heather	SIUE	Sr	115	445	3.87	Lanham, Andrea	NKU	Jr	111	64	0.58	Thompson, Maggie	DU	Jr	101	562	5.56
Holmes, Liz	NKU	So	122	471	3.86	Clements, Mallory	SIUE	Fr	109	59	0.54	Schwandt, Sarah	RU	Sr	120	636	5.30
Jones, Lindsey	UWP	Sr	116	438	3.78	Fischesser, Lynne	NKU	So	109	59	0.54	Buss, Allison	SIUE	Sr	115	590	5.13
Bibelhauser, Chelsea	BU	So	109	410	3.76	Holmes, Liz	NKU	So	122	65	0.53	Eikenberry, Megan	BU	Sr	108	468	4.33
Ellis, Rachel	DU	Sr	105	392	3.73	Doubler, Chelse	USI	Jr	106	56	0.53	<b>Fallos, Ashley</b>	<b>UIndy Fr</b>	<b>131</b>	<b>526</b>	<b>4.02</b>	
Ryan, Emily	USI	Jr	116	423	3.65	Forbes, Natalie	NKU	Fr	108	50	0.46	Hodge, Abby	LU	Sr	110	440	4.00
Dye, Tristen	NKU	So	103	370	3.59	Evans, Breanne	SJC	Sr	106	47	0.44	Probst, Amanda	USI	Jr	117	464	3.97
Warhol, Megan	DU	Fr	105	366	3.49	Dixon, Brittany	NKU	So	79	31	0.39	Nehls, Jackie	UWP	So	114	446	3.91
Nugent, Theresa	LU	Jr	106	368	3.47	Morrone, Andrea	LU	So	103	40	0.39	Ellis, Rachel	DU	Sr	105	409	3.90
Schroff, Karla	RU	Sr	121	413	3.41	Medina, Claudia	UMSL	So	91	35	0.38	Nichols, Heather	UMSL	So	97	370	3.81

## 2005 GLVC INDIVIDUAL LEADERS - CONF. ONLY

		<i>Minimum 3.0 attacks per game</i>																			
<b>Percentage</b>		CI	G	K	E	TA	Pct.	<b>Assists</b>		CI	G	A	/Gm	<b>Blocks</b>		CI	G	BS	BA	TB	/Gm
Bonde, Heather	SIUE	Sr	51	206	49	432	.363	Majernik, Krystal	SIUE	Sr	48	601	12.52	Fowler, Rachel	RU	So	108	40	98	138	1.28
<b>Ross, Lynne</b>	<b>UIndy Jr</b>	<b>65</b>	<b>162</b>	<b>36</b>	<b>350</b>	<b>.360</b>	Lanham, Andrea	NKU	Jr	59	738	12.51	Lisle, Rebecca	LU	So	102	15	112	127	1.25	
Jones, Lindsey	UWP	Sr	61	247	56	536	.356	Jennings, Kecia	RU	Sr	54	646	11.96	<b>Holladay, Emeral</b>	<b>UIndy Jr</b>	<b>127</b>	<b>26</b>	<b>128</b>	<b>154</b>	<b>1.21</b>	
<b>Holladay, Emeral</b>	<b>UIndy Jr</b>	<b>65</b>	<b>156</b>	<b>38</b>	<b>342</b>	<b>.345</b>	Harmon, Marisa	BU	Fr	59	691	11.71	Talsma, Tina	SIUE	Sr	115	23	109	132	1.15	
Eisenmenger, Kristina	NKU	Fr	59	216	64	442	.344	Wilson, Stephanie	USI	So	58	677	11.67	Ellerbusch, Laura	USI	Sr	117	25	106	131	1.12
Holmes, Liz	NKU	So	59	202	62	408	.343	Brinker, Lisa	UMSL	Fr	55	567	10.31	Bonde, Heather	SIUE	Sr	115	14	113	127	1.10
Wetterer, Katie	BU	Fr	58	125	40	275	.309	Vycital, Ashley	UWP	Jr	46	450	9.78	Figiel, Shelley	SJC	Sr	79	28	58	86	1.09
Fowler, Rachel	RU	So	55	161	43	386	.306	Morrone, Andrea	LU	So	61	538	8.82	<b>Ross, Lynne</b>	<b>UIndy Jr</b>	<b>149</b>	<b>28</b>	<b>126</b>	<b>154</b>	<b>1.03</b>	
Talsma, Tina	SIUE	Sr	50	157	42	406	.283	Thoreson, Tedi	DU	Jr	56	484	8.64	Burns, Jessica	DU	So	84	12	72	84	1.00
Rahman, Molly	USI	So	58	98	30	252	.270	Kristin Harris	QU	Fr	55	413	7.51	Rahman, Molly	USI	So	117	13	104	117	1.00

<b>Kills/Game</b>		CI	G	K	/Gm	<b>Service Aces</b>		CI	G	SA	/Gm	<b>Digs</b>		CI	G	Digs	/Gm
Jones, Lindsey	UWP	Sr	61	247	4.05	Clements, Mallory	SIUE	Fr	52	37	0.71	Thompson, Maggie	DU	Jr	101	562	5.56
Bonde, Heather	SIUE	Sr	51	206	4.04	Doubler, Chelse	USI	Jr	53	27	0.51	Schwandt, Sarah	RU	Sr	120	636	5.30
Ryan, Emily	USI	Jr	57	227	3.98	Lanham, Andrea	NKU	Jr	59	29	0.49	Buss, Allison	SIUE	Sr	115	590	5.13
Warhol, Megan	DU	Fr	56	220	3.93	Evans, Breanne	SJC	Sr	52	25	0.48	Eikenberry, Megan	BU	Sr	108	468	4.33
Ellis, Rachel	DU	Sr	56	216	3.86	Tieman, Maria	NKU	So	57	26	0.46	<b>Fallos, Ashley</b>	<b>UIndy Fr</b>	<b>131</b>	<b>526</b>	<b>4.02</b>	
Eisenmenger, Kristina	NKU	Fr	59	216	3.66	Fischesser, Lynne	NKU	Sr	55	24	0.44	Hodge, Abby	LU	Sr	110	440	4.00
Holmes, Liz	NKU	So	59	202	3.42	Morrone, Andrea	LU	So	61	26	0.43	Probst, Amanda	USI	Jr	117	464	3.97
Jennifer Dameworth	QU	Jr	55	188	3.42	Holmes, Liz	NKU	So	59	25	0.42	Nehls, Jackie	UWP	So	114	446	3.91
Bibelhauser, Chelsea	BU	So	58	198	3.41	Baumstark, Chelsea	UMSL	Fr	55	23	0.42	Ellis, Rachel	DU	Sr	105	409	3.90
Dye, Tristen	NKU	So	51	172	3.37	Dixon, Brittany	NKU	So	52	21	0.40	Nichols, Heather	UMSL	So	97	370	3.81

## 2005 ALL-GLVC

### First Team

Whitney Boling, OH	UIndy
Nathalia Rivera, OH	RU
Emily Ryan, OH	USI
Heather Bonde, MH	SIUE
Liz Holmes, MH	NKU
Kecia Jennings, S	RU
Stephanie Wilson, S	USI
Kristina Eisenmenger, OPP	NKU
Sarah Schwandt, DS	RU

### Second Team

Tristen Dye, OH	NKU
Theresa Nugent, OH	LU
Kindra Westendorf, OH	SIUE
Laura Ellerbusch, MH	USI
Rachel Fowler, MH	MH
Andrea Lanham, S	NKU
Krystal Majernik, S	SIUE
Lindsey Jones, OPP	UWP
Allison Buss, DS	SIUE

### Honorable Mention

Rachel Ellis, OH	DU
Megan Warhol, OH	DU
Kate Hofeldt, OH	SIUE
Chelsea Doubler, OH	USI
<b>Lynne Ross, MH</b>	<b>UIndy</b>
Andrea Morrone, S	LU
<b>Alyssa Carlotta, OPP</b>	<b>UIndy</b>
Maggie Thompson, DS	DU

### Player of the Year

Heather Bonde, MH	SIUE
-------------------	------

### Freshman of the Year

Kristina Eisenmenger, OPP	NKU
---------------------------	-----

### Coach of the Year

Tracy Rietzke	RU
---------------	----

Coach Jody Butera's 2005 volleyball team pieced together its seventh straight 20-win season, finishing 24-14 overall and earning Butera her 200th career win. Butera's squad was one of the hottest in all of Division II down the stretch, going 11-2 in October and earning the fifth seed in the GLVC tournament. The Hounds dispatched Southern Indiana in the opening round, a team that had beaten the Hounds just five days earlier. Indianapolis then provided one of the biggest upsets of the season, ousting Rockhurst, the host-school and No. 1 seed, by a 3-2 count. The resilient Greyhounds eventually fell in the title match, but secured a second-place finish in the league, earning 12 points in the GLVC All-Sports trophy standings.

Preseason critics of the 2005 squad pointed to the loss of two starters as major obstacles to the team's success. Shaun McAllister and Deanna McClure, leaders of the '04 squad, rank as two of the all-time UIndy greats.

In a brilliant collegiate career, McAllister tallied 2,025 kills and a .328 hitting percentage, both school records. She earned All-GLVC honors all four years and was named to the All-Great Lakes Region team by AVCA as a senior.

McClure abetted in the majority of McAllister's kills. She set a UIndy record of her own by amassing 4392 career assists on her way to All-GLVC second team honors in her final year.

Despite the loss of these two talented athletics, the Greyhounds of '05 stepped up to fill the holes admirably. Senior Whitney Boling became the Greyhounds number one offensive option, finishing the year with her third straight season of over 400 kills, putting her career total of 1457, second all-time at the school. Butera opted for a platoon at the setter position. Senior Emily Huey led the team with 939 helpers while freshman Beth Robbins assisted on 793 kills in her rookie season.

Indianapolis opened the season with a win over Christian Brothers in the West Florida tournament. The Hounds split four matches in the Sunshine State, including a loss versus No. 15 Florida Southern. Boling finished the two-day event with 48 kills, 31 digs and 8 blocks.

The Greyhounds continued to toil around .500, never straying more than two games above or below the break-even mark through the end of September. However, after starting the season with a 6-8 record, the Hounds went on a tear. Starting with a road win over intra-city rival Marian, UIndy went on to win 16 of its next 19 matches, seven by way of the sweep. The streak left the Greyhounds with twice as many wins as losses and in prime position to secure a high seed in the GLVC tournament.



UIndy went into November red hot, amassing a 22-11 record. However, the Greyhounds would finish their regular season with two tough road contests. The hot streak ended there, as the Hounds lost both matches in five games to two talented conference foes, SIU Edwardsville and Southern Indiana. Both deciding game fives needed more than the regulation 15 points to conclude, with the Hounds falling 17-15 versus SIUE and 24-22 in a relative marathon against USI. The two setbacks had UIndy settling for the fifth seed in the forthcoming conference tourney. But with the tournament field set, the Hounds went to Kansas City with revenge on their minds.

The Great Lakes Valley Conference tournament began on November 10 and UIndy was slated to face the fourth-seeded Southern Indiana Screaming Eagles, a team it had lost to just five days earlier. After dropping the first game 30-26, the Greyhounds went on to take the next three games, including hitting at a .343 clip in the fourth and final game. The Hounds were led by junior Emeral Holladay, who registered 17 kills and nine blocks. Lynne Ross hit a match-high .440 with 14 kills against only three errors.



In its fourth straight appearance in the conference semi-finals, UIndy was matched up against the host school, top-seeded Rockhurst. In their first year in the GLVC, the Hawks paced the league with a 15-1 conference record while going 29-7 overall.

The Hounds dropped two of the first three games to dig themselves a hole against the volleyball powerhouse. Facing elimination in game four, UIndy started quickly, building leads of 8-4, 12-6 and 14-7. Four Hounds' errors kept the door open as the Hawks tied the game at 16. Five lead changes would follow, the last of which would belong to the Greyhounds, who tied the match at two games apiece, forcing a deciding game five.

With the winner needing just 15 points, the UIndy offense wasted little time. After going down 2-0, the Greyhounds scored the next six points and didn't look back, defeating the number one seed 15-8. Boling starred for the Hounds, putting up 17 kills and 14 digs. Freshman Alyssa Carlotta added a match-high 21 kills while hitting .425.

Butera was pleased by her team's effort, but the win was also special on a personal level. The victory gave Butera her 200th career win, just 27 short of the all-time program record.

The Greyhounds would get another shot at redemption as they advanced to the conference finals to face second seeded SIU Edwardsville. Though the Cougars needed the maximum to defeat the Hounds in their last meeting, they needed just four games to dispatch them in the tournament. UIndy would finish the '05 season with the distinction of GLVC runner-up.

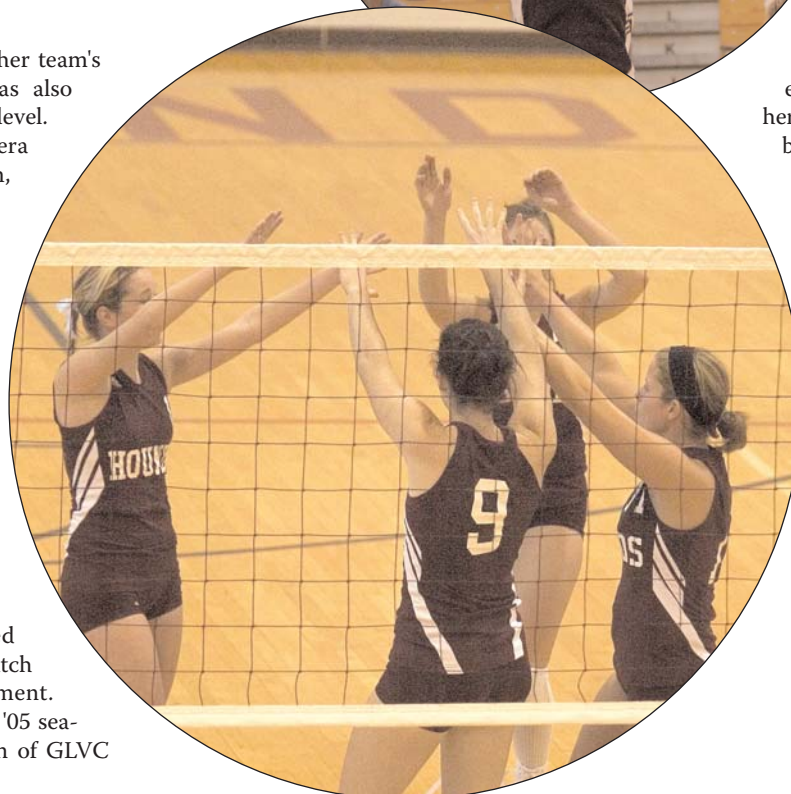
The loss may sting the most for the two seniors, but their accomplishments at Indianapolis should lend them comfort. Boling capped a successful term at UIndy with her 32nd collegiate double-double in her final match, registering 14 kills

and 16 digs. She finished as only the second Greyhound to surpass 1000 career kills and career digs. Huey finished her time at UIndy as the only player in the school's top ten in career kills and career assists.

As part of the class of 2006, Boling and Huey finished their college tenures with 102 total wins and seven conference tournament victories, both of which are UIndy records. In addition, they were part of the '03 team, the only Greyhound squad to capture a GLVC title and reach the NCAA II tourney.

Three Greyhounds' seasons were rewarded with post season accolades from the conference. Whitney Boling earned her third All-GLVC recognition by being named first team all-conference. Junior Lynne Ross and freshman Alyssa Carlotta garnered all-conference honorable mention.

Two team awards were also distributed. Boling was named the Greyhound MVP while freshman Beth Robbins earned the Kelso-Reid Mental Attitude Award.



**Bellarmine**



Location: Louisville, Ky.  
 Enrollment: 2,494  
 Nickname: Knights  
 Colors: Silver/ Scarlet  
 Arena: Knights Hall (2,800)  
 '05 Record: 16-14, 8-8 GLVC  
 Athletic Dir: Scott Wiegandt  
 Head Coach: Dan Palmer  
 Record at BU/Career: 20-34 (3rd season)/ same  
 Associate Head Coach: Tim Lynch  
 SID: Nels Pops Office: (502) 452-8078  
 Series Record: Indianapolis 25, Bellarmine 17  
 Current Win Streak: 1, Indianapolis

**Drury**



Location: Springfield, Mo.  
 Enrollment: 1,573  
 Nickname: Panthers  
 Colors: Scarlet and Gray  
 Arena: Weiser Gym (2,200)  
 '05 Record: 12-18, 8-8 GLVC  
 Athletic Dir: Dr. Edsel Matthews  
 Head Coach: Amy Gardner (SW Missouri State, '93)  
 Record at DU/Career: 28-37 (3rd season)/ same  
 Assistant Coach: Lawrence Anderson  
 SID: Scott Puryear Office: (417) 873-7374  
 Series Record: Indianapolis 1, Drury 0  
 Current Win Streak: 1, Indianapolis

**Kentucky Wesleyan**



Location: Owensboro, Ky.  
 Enrollment: 755  
 Nickname: Panthers  
 Colors: Purple and White  
 Arena: Woodward Center  
 '05 Record: 2-24, 0-16 GLVC  
 Athletic Dir: Tom Tallman  
 Head Coach: Dale White (Massachusetts, '77)  
 Record at KWC/Career: 2-24 (2nd season)/ same  
 SID: Roy Pickerill Office: (270) 852-3143  
 Series Record: Indianapolis 27, KWC 2  
 Current Win Streak: 14, Indianapolis

**Lewis**



Location: Romeoville, Ill.  
 Enrollment: 5,200  
 Nickname: Flyers  
 Colors: Red and White  
 Arena: Neil Carey Arena (855)  
 '05 Record: 17-13, 9-7 GLVC  
 Athletic Dir: Dan Schumacher  
 Head Coach: Karen Lockyer (Illinois, '73)  
 Record at LU/Career: 726-423-7 (32nd year)/ same  
 Graduate Assistant Coach: Stacey Moss  
 SID: Mickey Smith Office: (815) 836-5248  
 Series Record: Lewis 29, Indianapolis 8  
 Current Win Streak: 5, Indianapolis

**Missouri-St. Louis**



Location: St. Louis, Mo.  
 Enrollment: 16,000  
 Nickname: Riverwomen  
 Colors: Red and Gold  
 Arena: Mark Twain Building (4,736)  
 '05 Record: 6-22, 6-10 GLVC  
 Athletic Dir: Patricia Dolan  
 Head Coach: Josh Lauer (Washington-St. Louis)  
 Record at UMSL/Career: 17-29 (3rd season)/ same  
 Assistant Coaches: Travis Toy, Molly Bommarito  
 SID: Todd Addington Office: (314) 516-5660  
 Series Record: UMSL 11, Indianapolis 7  
 Current Win Streak: 7, Indianapolis

**Northern Kentucky**



Location: Highland Heights, Ky.  
 Enrollment: 14,000  
 Nickname: Norse  
 Colors: Gold, Black and White  
 Arena: Regents Hall (1,685)  
 '05 Record: 26-7, 12-4 GLVC  
 Athletic Dir: Jane Meier  
 Head Coach: Carlos Chia (Thomas More, '89)  
 Record at NKU/Career: 124-43 (6th season)/ same  
 Assistant Coach: Kristin Perkins  
 SID: Don Owen Office: (859) 572-5470  
 Series Record: Northern Kentucky 34, Indianapolis 4  
 Current Win Streak: 1, Indianapolis

## Quincy



Location: Quincy, Ill.  
 Enrollment: 1,250  
 Nickname: Lady Hawks  
 Colors: Brown, Gold and White  
 Arena: Pepsi Arena (2,000)  
 '05 Record: 4-20, 2-14 GLVC  
 Athletic Dir: Patrick Atwell  
 Head Coach: Keith Rubio (CSU-Northridge, '99)  
 Record at QU/Career: 14-41 (3rd season)/ same  
 Assistant Coaches: David Shierling, Hadley Foster,  
 Ryan Ehnert, Jon Moreno  
 SID: Frank Cash Office: (217) 228-5290  
 Series Record: Quincy 8, Indianapolis 6  
 Current Win Streak: 6, Indianapolis

## Rockhurst



Location: Kansas City, Mo.  
 Enrollment: 2,944  
 Nickname: Hawks  
 Colors: Blue and White  
 Arena: Mason-Halpin Field House (1,500)  
 '05 Record: 29-7, 15-1 GLVC  
 Athletic Dir: Frank Diskin  
 Head Coach: Tracy Rietzke (Kansas Wesleyan, '77)  
 Record at RU/Career: 736-109 (18 yrs)/ 908-154 (24 yrs.)  
 SID: John Dodderidge Office: (816) 501-4850  
 Series Record: Rockhurst 2, Indianapolis 1  
 Current Win Streak: 1, Indianapolis

## Saint Joseph's



Location: Rensselaer, Ind.  
 Enrollment: 1,000  
 Nickname: Pumas  
 Colors: Cardinal and Purple  
 Arena: Richard F. Scharf Alumni Fieldhouse (2,000)  
 '05 Record: 10-22, 4-12 GLVC  
 Athletic Dir: Bill Massoels  
 Head Coach: Jill Schopieray (Ferris State, '01)  
 Record at SJC/Career: 0-0 (1st season)/ same  
 Assistant Coach: Brett Sayer  
 SID: Clark Teuscher Office: (219) 866-6141  
 Series Record: Indianapolis 32, Saint Joseph's 28  
 Current Win Streak: 10, Indianapolis

## Southern Indiana



Location: Evansville, Ind.  
 Enrollment: 10,004  
 Nickname: Screaming Eagles  
 Colors: Red, White and Blue  
 Arena: Physical Activities Center (3,300)  
 '05 Record: 19-13, 11-5 GLVC  
 Athletic Dir: Jon Mark Hall  
 Head Coach: Leah Mercer (USI, '02)  
 Record at USI/Career: 19-13 (2nd season)/ same  
 Assistant Coach: Kyle Walton  
 SID: Ray Simmons Office: (812) 465-1622  
 Series Record: USI 20, Indianapolis 14  
 Current Win Streak: 1, Indianapolis

## Southern Ill. Edwardsville



Location: Edwardsville, Ill.  
 Enrollment: 13,460  
 Nickname: Cougars  
 Colors: Red and White  
 Arena: Vadalabene (4,000)  
 '05 Record: 28-6, 14-2 GLVC  
 Athletic Dir: Brad Hewitt  
 Head Coach: Todd Gober (Northwestern [Iowa], '85)  
 Record at SIUE/Career: 120-43 (6th season)/ 324-93 (11th year)  
 Assistant Coach: Katie Gillman  
 SID: Eric Hess Office: (618) 650-3608  
 Series Record: SIUE 15, Indianapolis 4  
 Current Win Streak: 3, SIUE

## Wisconsin-Parkside



Location: Kenosha, Wis.  
 Enrollment: 5,100  
 Nickname: Rangers  
 Colors: Green, Black and White  
 Arena: Sports and Activities Center (2,120)  
 '05 Record: 6-25, 4-12 GLVC  
 Athletic Dir: David Williams  
 Head Coach: Nichole Roethig (Minn. State-Mankato, '99)  
 Record at UWP/Career: 34-56 (4th season)/ same  
 Assistant Coach: Rob Wolter  
 SID: Steve Kratochvil Office: (262) 595-2045  
 Series Record: UW-Parkside 12, Indianapolis 11  
 Current Win Streak: 6, Indianapolis



Heather Kissel ranks in the Greyhound top ten in assists (3rd), aces (4th) and digs (9th).



Whitney Boling is one of only two Greyhounds to surpass 1000 career kills and 1000 career digs.



Senior Lynne Ross needs 111 blocks to become the school's all-time leader.

## Kills

2025	Shaun McAllister	2001-04
1457	Whitney Boling	2002-05
1348	Mendy Hill	1996-99
1179	Paige Balka	1989-92
1048	Mary Eichenberger	1982-85
991	Susie Kuntz	1983-86
948	Kristie Swing	1980-83
<b>909</b>	<b>Lynne Ross</b>	<b>2003-</b>
767	Emily Kubala	1999-01
765	Emily Huey	2002-05

## Attack attempts

4659	Shaun McAllister	2001-04
3854	Whitney Boling	2002-05
3511	Mendy Hill	1996-99
3250	Paige Balka	1989-92
2754	Susie Kuntz	1983-86
2738	Mary Eichenberger	1982-85
2538	Jennifer Suba	1994-97
2442	Emily Kubala	1999-01
2412	Becky Davis	1984-86, 88
2294	Kristie Swing	1980-83

## Attack pct. (min. 50 kills)

.363	Tandace Joseph	1980-82
.328	Shaun McAllister	2001-04
.328	Emeral Holladay	2005
.313	Angela Ranta	1999-02
.310	Katie Gompert	2001-02
<b>.281</b>	<b>Alyssa Carlotta</b>	<b>2005-</b>
<b>.275</b>	<b>Lynne Ross</b>	<b>2003-</b>
.274	Paige Balka	1989-92
.269	Sarah Clough	2003-04
.268	Katie Beck	2003-04

## Assists\*

4392	Deanna McClure	2001-04
4096	Delanie Phillips	1998-01
3331	Heather Kissel	1995-98
2397	Susan Trame	1991-94
2285	Leanne Webb	1987-90
1739	Emily Huey	2002-05
855	Jodi Hilliard	1993-95
<b>793</b>	<b>Beth Robbins</b>	<b>2005-</b>
412	Stephanie Hoff	1996-97
355	Kimi Hellenberg	1985-87

## Service aces

238	Lisa Acton	1981-84
177	Kathy Yates	1983-85
172	Kristie Swing	1980-83
170	Heather Kissel	1995-98
144	Joyce Gage	1979-82
137	Tandace Joseph	1980-82
133	Whitney Boling	2002-05
131	Leanne Webb	1987-90
122	Mary Eichenberger	1982-85
116	Erica Bankowski	1999-02

## Digs+

1525	Kristin Lay	2002-05
1218	Erica Bankowski	1999-02
1175	Emily Kubala	1999-01
1116	Mendy Hill	1996-99
1103	Shaun McAllister	2001-04
1063	Jennifer Johnson	2000-03
1010	Whitney Boling	2002-05
912	Delanie Phillips	1998-01
806	Heather Kissel	1995-98
800	Jennifer Suba	1994-97

## Block solos^

243	Jennifer Suba	1994-97
204	Kristie Swing	1980-83
166	Jen Johnson	1993-96
150	Angela Ranta	1999-02
144	Tandace Joseph	1980-82
128	Mary Margaret Warrick	1997-00
123	Shaun McAllister	2001-04
118	Paige Balka	1989-92
109	Casey Harter	1999-02
106	Mary Eichenberger	1982-84

## Block assists^

344	Jen Johnson	1993-96
<b>337</b>	<b>Lynne Ross</b>	<b>2003-</b>
288	Jennifer Suba	1994-97
268	Angela Ranta	1999-02
250	Shaun McAllister	2001-04
244	Paige Balka	1989-92
235	Mary Eichenberger	1982-84
232	Amy Strieter	1992-94
213	Lisa Acton	1981-84
207	Kristie Swing	1980-83

## Total blocks^

531	Jennifer Suba	1994-97
510	Jen Johnson	1993-96
<b>421</b>	<b>Lynne Ross</b>	<b>2003-</b>
418	Angela Ranta	1999-02
411	Kristie Swing	1980-83
373	Shaun McAllister	2001-04
362	Paige Balka	1989-92
301	Casey Harter	1999-02
295	Mary Margaret Warrick	1997-00
295	Amy Strieter	1992-94

+dig records from 1981

\*assist records from 1985

^block records incomplete from 1985-88

## Kills

662	Shaun McAllister	2003
548	Shaun McAllister	2004
503	Whitney Boling	2003
500	Shaun McAllister	2002
432	Mendy Hill	1999
423	Whitney Boling	2004
412	Whitney Boling	2005
396	Mendy Hill	1998
394	Emily Kubala	2000
384	Paige Balka	1992

## Attack attempts

1473	Shaun McAllister	2003
1279	Shaun McAllister	2004
1252	Whitney Boling	2003
1247	Whitney Boling	2005
1240	Shaun McAllister	2002
1226	Emily Kubala	2000
1086	Mendy Hill	1999
1062	Bethany Dulle	2005
1045	Mendy Hill	1998
1022	Emily Kubala	1999

## Attack pct. (min. 50 kills)

.404	Tandace Joseph	1980
.376	Tandace Joseph	1982
.367	Angela Ranta	2001
.351	Angela Ranta	2002
.346	Shaun McAllister	2003
.345	Shaun McAllister	2001
.342	Paige Balka	1992
.336	Shaun McAllister	2004
.331	Susie Kuntz	1984
.328	Emeral Holladay	2005

## Assists\*

1542	Deanna McClure	2004
1481	Deanna McClure	2003
1429	Delanie Phillips	2000
1400	Delanie Phillips	1999
1243	Deanna McClure	2002
1190	Delanie Phillips	2001
1053	Heather Kissel	1998
939	Emily Huey	2005
801	Susan Trame	1993
<b>793</b>	<b>Beth Robbins</b>	<b>2005</b>

## Service aces

86	Lisa Acton	1983
76	Kathy Yates	1983
70	Lisa Acton	1982
68	Tandace Joseph	1982
62	Lisa Acton	1984
61	Heather Kissel	1996
58	Joyce Gage	1982
57	Amy Strieter	1994
57	Kathy Yates	1984
57	Kristie Swing	1983

## Digs+

613	Kristin Lay	2003
<b>526</b>	<b>Ashley Fallos</b>	<b>2005</b>
506	Kristin Lay	2004
497	Emily Kubala	2000
465	Erica Bankowski	2002
378	Whitney Boling	2005
373	Emily Pilgrim	1997
365	Jennifer Johnson	2003
365	Jennifer Suba	1997
351	Emily Kubala	2001

## Block solos<sup>^</sup>

103	Jennifer Suba	1997
89	Paige Balka	1992
79	Kristie Swing	1982
76	Tandace Joseph	1982
73	Rachael Bozek	1998
68	Carmen Griffith	1987
63	MaryMargaret Warrick	1997
62	Jen Johnson	1994
61	Kristie Swing	1983
59	Lesly Miller	1992

## Block assists<sup>^</sup>

182	Paige Balka	1992
166	Jen Johnson	1994
152	Katie Beck	2003
133	Denise Unrue	1992
128	Emeral Holladay	2005
<b>126</b>	<b>Lynne Ross</b>	<b>2003</b>
<b>126</b>	<b>Lynne Ross</b>	<b>2005</b>
119	Kristie Swing	1983
118	Jennifer Suba	1997
106	Lisa Schulfer	2005

## Total blocks<sup>^</sup>

271	Paige Balka	1992
228	Jen Johnson	1994
221	Jennifer Suba	1997
209	Katie Beck	2003
187	Denise Unrue	1992
<b>167</b>	<b>Lynne Ross</b>	<b>2003</b>
165	Lesly Miller	1992
161	Kristie Swing	1982
159	Angela Ranta	2002
154	Emeral Holladay	2005
<b>154</b>	<b>Lynne Ross</b>	<b>2005</b>

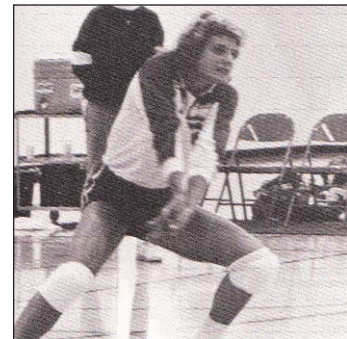
+dig records from 1981

\*assist records from 1985

<sup>^</sup>block records incomplete from 1985-88



Lisa Acton led the Greyhounds in service aces and digs three straight years (1982-'84). She holds both season and career records for aces.



Former Greyhound player and coach Paige Balka set the team record for blocks in a season by recording 271 total blocks in 1992.



Shaun McAllister, Ulndy's all-time kills leader, recorded three seasons of at least 500 kills.

## KILLS

### **Three-game match**

64 at Kentucky Wesleyan, 10/10/01

### **Four-game match**

90 at Marian, 10/12/00

### **Five-game match**

138 vs. Wheeling Jesuit (W.V.),  
09/24/99

### **Season (per-game average)**

15.01 2004 (1891 K in 126 games)

### GLVC

### **Three-game match**

64 at Kentucky Wesleyan, 10/10/01

### **Four-game match**

78 at Bellarmine, 10/02/99

### **Five-game match**

85 at Ashland, 09/11/99

## ATTACK ATTEMPTS

### **Three-game match**

187 at SIU Edwardsville, 10/28/00

### **Four-game match**

236 vs. Lewis, 10/21/00

### **Five-game match**

314 vs. Wheeling Jesuit (W.V.),  
09/24/99

### GLVC

### **Three-game match**

187 at SIU Edwardsville, 10/28/00

### **Four-game match**

236 vs. Lewis, 10/21/00

### **Five-game match**

267 at Missouri-St. Louis, 10/25/03

## SERVICE ACES

### **Three-game match**

27 vs. West Virginia State, 08/30/03

### **Four-game match**

16 vs. Spring Arbor (Mich.), 09/03/99

### **Five-game match**

12 vs. Nebraska-Omaha, 08/30/03

### **Season (per-game average)**

3.09 1982 (340 in 110 games)

### GLVC

### **Three-game match**

14 at Ashland, 09/07/02

### **Four-game match**

11 at Bellarmine, 10/20/01

### **Five-game match**

9 vs. Lewis, 10/04/05

## DIGS

### **Three-game match**

92 vs. Missouri-St. Louis, 09/15/00

### **Four-game match**

144 vs. Indiana (Pa.), 10/01/05

### **Five-game match**

140 at Missouri-St. Louis, 10/25/03

### **Season (per-game average)**

18.87 2000 (2453 in 130 games)

### GLVC

### **Three-game match**

92 vs. Missouri-St. Louis, 09/15/00

### **Four-game match**

110 vs. Lewis, 10/21/00

### **Five-game match**

140 at Missouri-St. Louis, 10/25/03

## BLOCKS

### **Three-game match**

25 vs. Taylor, 10/26/00

### **Four-game match**

30 vs. Marian, 09/08/99

### **Five-game match**

23 at New Haven, 09/02/00

### GLVC

### **Three-game match**

18 vs. Kentucky Wesleyan, 09/21/02

### **Four-game match**

19 vs. Lewis, 10/06/01

### **Five-game match**

20 vs. Southern Indiana, 11/15/03

## MISCELLANEOUS

**Most Wins:** 29 (2003)

**Fewest Wins:** 4 (1990)

**Most Losses:** 23 (1990)

**Fewest Losses:** 10 (2001)

**Highest Win %:** .725 (29-11, 2003)

**Lowest Win %:** .148 (4-23, 1990)

**Longest Win Streak:** 11

(09/01/02-09/14/02)

**Longest Losing Streak:** 15

(09/29/90 - 11/03/90)

*All per-game records since 1985  
All single match records since 1999*



*Pictured is the 2003 UIndy volleyball team. The squad finished the season 29-11 (12-3 GLVC) and became the first Greyhound squad to make the NCAA tournament.*

## KILLS

### **Three-game match**

21 Shaun McAllister  
vs. Wisconsin-Parkside, 09/25/04

### **Four-game match**

39 Mendy Hill  
at Bellarmine, 10/02/99

### **Five-game match**

33 Whitney Boling  
vs. Northern Kentucky, 10/11/03

### **Season (per-game average)**

4.35 Shaun McAllister  
(548 kills in 126 games), 2004

4.32 Mendy Hill  
(432 kills in 100 games), 1999

4.27 Shaun McAllister  
(662 kills in 155 games), 2003

### GLVC

### **Three-game match**

21 Shaun McAllister  
vs. Wisconsin-Parkside, 09/25/04

### **Four-game match**

39 Mendy Hill  
at Bellarmine, 10/02/99

### **Five-game match**

33 Whitney Boling  
vs. Northern Kentucky, 10/11/03

## ATTACK ATTEMPTS

### **Three-game match**

54 Emily Kubala  
at SIU-Edwardsville, 10/28/00

### **Four-game match**

89 Mendy Hill  
at Bellarmine, 10/02/99

### **Five-game match**

75 Shaun McAllister  
at Missouri-St. Louis, 10/25/03

### GLVC

### **Three-game match**

54 Emily Kubala  
at SIU-Edwardsville, 10/28/00

### **Four-game match**

89 Mendy Hill  
at Bellarmine, 10/02/99

### **Five-game match**

75 Shaun McAllister  
at Missouri-St. Louis, 10/25/03

## SERVICE ACES

### **Three-game match**

7 Four times

### **Four-game match**

6 Emily Kubala  
vs. Spring Arbor (Mich.), 09/03/99

### **Five-game match**

6 Mendy Hill at Ashland, 09/11/99

### **Season (per-game average)**

0.656 Heather Kissel  
(61 aces in 93 games), 1996

0.610 Lesly Miller  
(50 aces in 82 games), 1991

0.567 Leanne Webb  
(51 aces in 90 games), 1987

### GLVC

### **Three-game match**

6 Whitney Boling  
vs. Kentucky Wesleyan, 09/26/03

### **Four-game match**

5 Emily Huey  
vs. Northern Kentucky, 10/29/05

### **Five-game match**

6 Mendy Hill at Ashland, 09/11/99

## DIGS

### **Three-game match**

24 Kristin Lay  
vs. Missouri-St. Louis, 09/24/05

### **Four-game match**

31 Ashley Fallos  
vs. Minn. St.-Mankato, 09/02/05

### **Five-game match**

40 Kristin Lay  
at Missouri-St. Louis, 10/25/03

### **Season (per-game average)**

4.016 Kristen Lay  
(506 digs in 126 games), 2004

4.015 Ashley Fallos  
(526 digs in 131 games), 2005

3.853 Emily Kubala  
(497 digs in 129 games), 2000

### GLVC

### **Three-game match**

24 Kristin Lay  
vs. Missouri-St. Louis, 09/24/05

### **Four-game match**

29 Ashley Fallos  
vs. Southern Indiana, 11/10/05

### **Five-game match**

40 Kristin Lay  
at Missouri-St. Louis, 10/25/03

## BLOCKS

### **Three-game match**

15 Barbara Hahn vs. Taylor, 10/26/00

### **Four-game match**

11 Angela Ranta  
vs. Indiana Wesleyan, 10/11/01

### **Five-game match**

15 Emeral Holladay at Lewis, 10/21/05

### **Season (per-game average)**

2.82 Paige Balka  
(271 blocks in 96 games), 1992

### GLVC

### **Three-game match**

10 Katie Beck  
at Southern Indiana, 09/27/03

### **Four-game match**

11 Lisa Dolasinski  
vs. Northern Kentucky, 09/20/00

### **Five-game match**

15 Emeral Holladay at Lewis, 10/21/05

*All per-game records since 1985  
All single match records since 1999*



*Ashley Fallos scooped 31 digs in a four-game match against Minnesota State-Mankato on Sep. 2, 2005. Her season total of 526 digs in '05 was the second highest in school history.*

# Year-by-Year Leaders

## HITTING PERCENTAGE

Year	Player	Pct
1978	Karen Koelmel	-.080
1979	Marcia Burns	.178
1980	Tandace Joseph	.404
1981	Terri Wiese	.333
1982	Tandace Joseph	.376
1983	Terri Wiese	.260
1984	Susie Kuntz	.331
1985	Mary Eichenberger	.257
1986	Justina Plummer	.224
1987	Carmen Griffith	.189
1988	Carmen Griffith	.197
1989	Paige Balka	.237
1990	Paige Balka	.240
1991	Paige Balka	.260
1992	Paige Balka	.342
1993	Jodi Hilliard	.429
1994	Amy Strieter	.217
1995	Amy Strieter	.246
1996	Jennifer Suba	.215
1997	Jill Van Velse	.250
1998	Mendy Hill	.244
1999	Delanie Phillips	.300
2000	Barbara Hahn	.274
2001	Angela Ranta	.367
2002	Angela Ranta	.351
2003	Shaun McAllister	.346
2004	Shaun McAllister	.336
2005	Emeral Holladay	.328

## ASSISTS

Year	Player	A
1978	<i>data incomplete</i>	
1979	<i>data incomplete</i>	
1980	<i>data incomplete</i>	
1981	<i>data incomplete</i>	
1982	<i>data incomplete</i>	
1983	<i>data incomplete</i>	
1984	<i>data incomplete</i>	
1985	Kathy Yates	670
1986	Kimi Hellenberg	351
1987	Leanne Webb	469
1988	Leanne Webb	610
1989	Leanne Webb	611
1990	Leanne Webb	595
1991	Susan Trame	531
1992	Susan Trame	672
1993	Susan Trame	801
1994	Jodi Hilliard	559
1995	Heather Kissel	1773
1996	Heather Kissel	1791
1997	Heather Kissel	1714
1998	Heather Kissel	1053
1999	Delanie Phillips	1400
2000	Delanie Phillips	1429
2001	Delanie Phillips	1190
2002	Deanna McClure	1243
2003	Deanna McClure	1481
2004	Deanna McClure	1542
2005	Emily Huey	939

## BLOCKS

Year	Player	TB
1978	Three tied	5
1979	Trina Bluhm	10
1980	Tandace Joseph	44
1981	Tandace Joseph	37
1982	Kristie Swing	161
1983	Kristie Swing	180
1984	Susie Kuntz	118
1985	<i>data incomplete</i>	
1986	<i>data incomplete</i>	
1987	<i>data incomplete</i>	
1988	<i>data incomplete</i>	
1989	Carmen Griffith	80
1990	Carmen Griffith	84
1991	Tricia Neely	57
1992	Paige Balka	271
1993	Jen Johnson	119
1994	Jen Johnson	228
1995	Jennifer Suba	87
1996	Jen Johnson	83
1997	Jennifer Suba	221
1998	Rachael Bozek	121
1999	Kristina Reed	113
2000	Barbara Hahn	117
2001	Angela Ranta	151
2002	Angela Ranta	159
2003	Katie Beck	209
2004	Lynne Ross	100
2005	Lynne Ross	154
	Emeral Holladay	154

## KILLS

Year	Player	K
1978	Sherrie Perkins	85
1979	Marcia Burns	89
1980	Tandace Joseph	238
1981	Kristie Swing	203
1982	Tandace Joseph	326
1983	Kristie Swing	285
1984	Mary Eichenberger	384
1985	Susie Kuntz	328
1986	Susie Kuntz	253
1987	Mary Beth Acra	171
1988	Carmen Griffith	215
1989	Paige Balka	218
1990	Paige Balka	293
1991	Paige Balka	284
1992	Paige Balka	384
1993	Courtney Sands	284
1994	Amy Strieter	269
1995	Amy Strieter	360
1996	Mendy Hill	221
1997	Mendy Hill	299
1998	Mendy Hill	396
1999	Mendy Hill	432
2000	Emily Kubala	394
2001	Shaun McAllister	315
2002	Shaun McAllister	500
2003	Shaun McAllister	662
2004	Shaun McAllister	548
2005	Whitney Boling	412

## SERVICE ACES

Year	Player	SA
1978	Marcia Burns	4
1979	Joyce Gage	22
1980	Kristie Swing	44
1981	Joyce Gage	40
1982	Lisa Acton	70
1983	Lisa Acton	86
1984	Lisa Acton	62
1985	Kathy Yates	44
1986	Kimi Hellenberg	41
1987	Leanne Webb	51
1988	Monica Clark	25
1989	Cinda Miller	26
1990	Leanne Webb	33
1991	Lesly Miller	50
1992	Denise Unrue	31
1993	Aimee Lammert	36
1994	Amy Strieter	57
1995	Amy Strieter	38
1996	Heather Kissel	61
1997	Heather Kissel	34
1998	Heather Kissel	40
1999	Barbara Hahn	42
2000	Barbara Hahn	44
2001	Erica Bankowski	54
2002	Angela Ranta	49
2003	Whitney Boling	48
2004	Deanna McClure	38
2005	Bethany Dulle	38

## DIGS

Year	Player	D
1978	<i>data incomplete</i>	
1979	<i>data incomplete</i>	
1980	<i>data incomplete</i>	
1981	<i>data incomplete</i>	
1982	Lisa Acton	93
1983	Lisa Acton	48
1984	Lisa Acton	97
1985	Susie Kuntz	185
1986	Heidi Lawrence	265
1987	Toni Dodson	197
1988	Becky Davis	215
1989	Paige Balka	99
1990	Shelley Groover	160
1991	Paige Balka	174
1992	Paige Balka	169
1993	Aimee Lammert	109
1994	Kristi Hayden	252
1995	Kristi Hayden	233
1996	Jennifer Suba	232
1997	Emily Pilgrim	373
1998	Kelly Gamble	335
1999	Emily Kubala	327
2000	Emily Kubala	497
2001	Emily Kubala	351
2002	Erica Bankowski	465
2003	Kristin Lay	613
2004	Kristin Lay	506
2005	Ashley Fallos	526

## 1978 (12-15)

S 18 Marian	W	2-0
S 18 IUPUI	W	2-1
S 26 Franklin	L	0-2
S 26 Marian	W	2-0
S 28 ST. JOSEPH'S	L	0-2
S 28 BUTLER	L	0-2
O 3 Butler	L	0-2
O 3 Earlham	L	1-2
O 7 TAYLOR	W	2-1
O 7 EVANSVILLE	W	2-1
O 12 St. Francis	W	2-1
O 12 Ind. Instit. of Tech.	L	0-2
O 14 IPFW	L	0-2
O 14 Huntington	L	1-2
O 14 DePauw	W	2-0
O 17 Ind. Wesleyan	L	0-2
O 17 Butler	W	2-1
O 17 Anderson	W	2-0
O 21 HANOVER	W	2-0
O 21 DEPAUW	W	2-0
O 24 IND. WESLEYAN	L	1-2
O 28 Taylor	L	0-2
O 28 Anderson	W	2-0
O 31 Butler	L	1-2
O 31 IUPUI	L	1-2
N 4 Ind. Wesleyan	L	1-2
N 4 Marian	L	1-2

## 1979 (10-17)

S 22 Franklin	L	0-3
S 22 Hanover	L	1-3
S 27 Butler	W	2-1
S 27 Vincennes	L	0-2
O 2 IUPUI	L	0-3
O 2 Indiana Tech	L	0-2
O 4 Marian	W	3-1
O 4 Hanover	W	3-0
O 6 Northeastern	L	0-2
O 6 Ill. Benedictine	L	0-2
O 9 Earlham	W	3-1
O 9 Ind. Wesleyan	W	3-2
O 13 DePauw	W	2-1
O 13 Huntington	L	0-2
O 18 Anderson	W	3-0
O 20 Taylor	L	1-2
O 20 Grace	W	2-0
O 20 IPFW	L	1-2
O 24 DePauw	W	2-1
O 24 Butler	L	0-2
O 24 Marian	L	0-2
O 26 Oakland City	L	1-2
O 26 Wabash Valley	W	2-1
O 27 Evansville	L	0-3
N 9 Franklin	L	0-2
N 9 IUPUI	L	0-2
N 9 Evansville	L	0-2

## 1980 (20-15)

S 20 Indiana Tech	L	0-2
S 20 Purdue Calumet	W	2-0
S 23 Ind. Wesleyan	W	2-0
S 23 IUPUI	L	0-2
S 27 Franklin	W	2-1
S 27 Oakland City	L	0-2
S 30 Taylor	W	2-0
S 30 Butler	W	2-0
O 2 Marian	W	2-0
O 2 Butler	L	0-2
O 2 IUPUI	L	0-2
O 4 Wabash Valley Jr.	W	3-1
O 4 Evansville	L	0-3
O 7 Thomas Moore	W	2-0
O 7 Hanover	L	2-1
O 14 Ind. Wesleyan	L	2-1
O 14 Earlham	W	2-0
O 18 DePauw	W	2-0
O 18 USI	W	2-0
O 25 Earlham	W	2-0
O 25 Franklin	L	0-2

O 25 IUPUI	W	2-1
O 25 Franklin	L	0-2
O 30 St. Mary of the Woods	W	2-0
O 30 Anderson	W	2-1
N 1 Marian	W	2-0
N 1 Manchester	W	2-0
N 4 St. Joseph's	L	1-2
N 4 Marian	L	0-2
N 6 ISU "B"	W	2-0
N 6 Vincennes	L	1-2
N 14 Valparaiso	L	1-2
N 14 Oakland City	W	2-0
N 14 Notre Dame	W	2-0
N 14 St. Joseph's	L	0-2

## 1981 (27-11)

S 16 Vincennes	W	2-0
S 16 Butler	W	2-0
S 26 Evansville	L	2-3
O 1 IUPUI	L	0-2
O 1 Butler	L	1-2
O 1 Marian	W	2-1
O 2 Northern Michigan	L	1-2
O 2 Chicago State	W	2-1
O 2 Valparaiso	W	2-1
O 2 Marquette	L	1-2
O 8 Franklin	L	1-3
O 10 Hanover	W	2-0
O 10 Manchester	W	2-0
O 13 Earlham	W	2-0
O 13 Ind. Wesleyan	W	2-1
O 16 Chicago State	W	1-1*
O 16 St. Francis (Ill.)	W	2-0
O 16 St. Joseph's	L	1-2
O 20 DePauw	W	2-0
O 20 St. Mary of the Woods	W	2-0
O 24 IPFW	W	2-0
O 24 Taylor	L	1-2
O 24 DePauw	W	2-0
O 24 Oakland City	W	2-1
O 24 Huntington	W	2-0
O 29 Anderson	W	2-0
O 29 Marian	W	2-0
N 7 Purdue Calumet	W	2-0
N 7 Concordia College (Ill.)	W	2-0
N 7 Oakland City	W	2-0
N 7 St. Joseph's	L	0-2
N 10 Huntington	W	2-0
N 10 Hanover	W	2-1
N 13 Butler	L	1-2
N 13 Oakland City	W	2-0
N 13 Notre Dame	W	2-0
N 13 IUPUI	W	2-0
N 14 Evansville	L	0-2

\* won by points

## 1982 (25-18)

S 17 Mount St. Joseph's	W	2-1
S 17 Lake Superior State	L	1-2
S 18 Dayton	W	2-1
S 18 Evansville	L	0-2
S 23 Huntington	W	2-0
S 23 Marian	W	2-0
S 24 USI	W	3-0
S 28 IUPUI	W	2-0
S 28 Marian	W	2-0
S 28 Butler	W	2-0
O 1 Illinois Central	L	1-2
O 1 Valparaiso	L	0-2
O 2 Northeastern Illinois	W	2-0
O 2 St. Joseph's	L	0-2
O 2 Marquette	W	2-0
O 2 ISU	L	0-2
O 7 DePauw	W	2-0
O 7 Franklin	W	2-1
O 9 Purdue Calumet	W	2-0
O 9 IPFW	L	1-2
O 9 Manchester	W	2-1
O 9 St. Francis	W	2-0
O 9 IPFW	W	2-1

O 9 St. Joseph's	W	2-1
O 12 Valparaiso	L	1-2
O 12 IUPUI	W	2-0
O 16 Bradley	W	2-1
O 16 St. Joseph's	L	0-2
O 16 ISU	L	0-2
O 27 Butler	W	3-2
O 29 Morehead State	W	2-1
O 29 Valparaiso	W	2-0
O 29 Miami (Ohio)	L	0-2
O 29 IPFW	W	2-0
O 29 Wright State	L	0-2
O 29 Loyola	L	1-2
N 6 St. Joseph's	L	1-2
N 6 Evansville	L	0-2
N 8 Northern Michigan	L	3-1
N 12 Lewis	L	1-2
N 12 USI	W	2-0
N 13 Kentucky Wesleyan	W	3-0
N 13 St. Joseph's	L	2-3

## 1983 (19-17)

S 16 Oakland City	W	2-1
S 16 Marian	L	1-2
S 20 Bellarmine	L	1-3
S 27 Marian	W	2-1
S 27 IUPUI	W	2-0
S 27 Butler	W	2-1
S 30 St. Joseph's	L	0-2
S 30 Marquette	L	1-2
S 30 Valparaiso	W	2-0
S 30 Ill. Central	W	2-0
S 30 Northwestern	W	2-0
S 30 St. Joseph's	L	0-2
O 4 Bellarmine	W	3-1
O 4 IPFW	L	1-3
O 7 St. Joseph's	W	2-0
O 7 IPFW	L	1-2
O 7 Xavier	W	2-1
O 7 Wright State	L	0-2
O 7 Franklin	L	1-2
O 14 Valparaiso	W	3-1
O 14 St. Joseph's	L	2-3
O 19 Butler	W	3-1
O 19 Mount St. Joseph	L	0-3
O 21 USI	W	2-0
O 21 IPFW	W	2-1
O 21 St. Joseph's	W	2-0
O 21 Bellarmine	L	1-2
O 21 Northern Kentucky	L	1-2
O 26 Anderson	W	2-0
O 26 IUPUI	W	2-0
N 2 Butler	L	1-3
N 11 Bellarmine	W	2-0
N 11 St. Joseph's	L	0-2
N 12 USI	W	3-0
N 12 Lewis	L	2-3
N 15 Indiana State	L	2-3

## 1984 (17-11)

S 11 DePauw	W	2-1
S 11 Milligan	W	2-0
S 21 USI	W	3-1
S 21 Mount St. Joseph	L	3-0
S 25 IUPUI	L	0-2
S 25 Marian	L	0-2
S 25 USI	W	2-0
S 27 Dayton	W	3-0
O 2 Bellarmine	W	3-1
O 5 Mount St. Joseph	L	1-3
O 9 Marian	W	3-1
O 12 St. Joseph's	W	3-1
O 13 Lewis	L	2-3
O 13 Kentucky Wesleyan	W	3-0
O 20 Franklin	L	0-3
O 20 St. Francis	W	3-2
O 24 Valparaiso	W	3-0
O 27 Ashland	L	2-3
O 27 Central State	W	2-0
O 29 Franklin	L	0-3

O 31 IPFW	L	0-3
N 3 Northern Kentucky	L	1-3
N 6 Butler	W	3-1
N 9 St. Joseph's	W	2-1
N 9 Ashland	W	2-1
N 9 USI	W	2-0
N 10 IPFW	L	0-3
N 10 Ashland	W	3-0

## 1985 (14-16, 8-10 GLVC)

S 17 DEPAUW	W	3-0
S 21 KY. WESLEYAN	W	3-0
S 24 Marian	W	2-1
S 24 IUPUI	L	0-2
S 26 Dayton	W	3-2
O 1 ST. JOSEPH'S	W	3-1
O 4 Walsh	W	2-1
O 5 Edinboro	W	2-0
O 5 Clarion State	L	0-2
O 7 NO. KENTUCKY	L	0-3
O 9 Bellarmine	L	0-3
O 11 Northern Michigan	L	1-2
O 11 Franklin	L	1-2
O 12 IPFW	L	0-2
O 12 Bellarmine	L	1-2
O 12 St. Joseph's	L	0-2
O 12 Wright State	L	0-2
O 15 IPFW	L	0-3
O 22 BELLARMINE	W	3-2
O 30 Northern Kentucky	L	0-3
N 1 SOUTHERN INDIANA	W	3-2
N 2 ST. JOSEPH	W	3-1
N 2 IPFW	L	1-2
N 5 BUTLER	L	1-2
N 9 USI	L	2-3
N 9 KY. WESLEYAN	W	3-0
N 12 Central State	W	3-1
N 15 IPFW	W	3-0
N 16 St. Joseph's	W	3-0
N 16 Northern Kentucky	L	2-3

## 1986 (13-11, 7-5 GLVC)

S 10 MARIAN	L	2-3
S 12 Central State	L	2-3
S 13 Ashland	W	3-2
S 13 Bluffton	W	3-1
S 16 DePauw	W	3-0
S 25 DAYTON	W	3-1
S 27 Lewis	L	1-3
O 1 IPFW	L	0-3
O 4 Southern Indiana	W	3-0
O 4 Kentucky Wesleyan	W	3-1
O 10 Oakland	L	2-3
O 10 Wright State	L	0-3
O 11 Northern Michigan	L	0-3
O 11 SOUTHERN INDIANA	W	2-0
O 16 IPFW	L	0-3
O 18 ASHLAND	W	3-1
O 21 IUPUI	W	3-0
O 24 LEWIS	L	1-3
O 24 BELLARMINE	W	3-1
O 25 NKU	L	1-3
O 28 Taylor	W	2-0
O 28 St. Joseph's	W	3-1
N 1 ST. JOSEPH'S	W	3-0
N 4 BUTLER	L	1-2

## 1987 (5-21, 3-10 GLVC)

S 15 DEPAUW	W	3-2
S 18 Southern Indiana	L	0-3
S 19 Kentucky Wesleyan	L	3-2
S 25 Northern Kentucky	L	0-3
S 26 Oakland	L	1-3
S 26 Montevallo	L	1-3
S 30 Bellarmine	W	3-2
O 3 Lewis	L	0-3
O 3 St. Joseph's	L	0-3
O 9 Florida Atlantic	L	1-3
O 10 Tampa	L	0-3
O 10 St. Leo	W	3-0



N 11	Bellarmino	L	1-3
<b>1998 (9-22, H-3 GLVC)</b>			
S 4	Indiana Wesleyan	W	3-0
S 4	Urbana (Ohio)	W	3-0
S 5	Cedarville	L	2-3
S 5	Grace	L	0-3
S 5	Central State	W	3-0
S 8	SIU EDWARDSVILLE	L	0-3
S 11	Saginaw Valley	L	0-3
S 12	Lake Superior State	L	0-3
S 12	Northwood	W	3-1
S 15	TAYLOR	L	1-3
S 18	Tampa	L	0-3
S 18	Lewis	L	0-3
S 19	Wisconsin-Parkside	L	0-3
S 22	SAINT JOSEPH'S	L	2-3
S 25	BELLARMINE	L	1-3
S 26	NO. KENTUCKY	L	1-3
O 2	UW-PARKSIDE	L	0-3
O 3	LEWIS	L	1-3
O 7	IPFW	L	0-3
O 13	Bellarmino	W	3-2
O 16	Concordia (Mich.)	W	3-0
O 16	Indiana Wesleyan	L	0-3
O 17	Tri-State	W	3-0
O 17	Dominican (Ill.)	W	3-1
O 23	Southern Indiana	L	2-3
O 24	Kentucky Wesleyan	W	3-0
O 27	SIU EDWARDSVILLE	L	0-3
O 30	IPFW	L	0-3
O 31	Saint Joseph's	L	1-3
N 6	MISSOURI-ST. LOUIS	L	1-3
N 7	QUINCY	L	0-3

### 1999 (22-15, 4-12 GLVC)

S 1	Manchester	W	3-0
S 3	Grace	W	3-0
S 3	St. Francis (Ind.)	W	3-1
S 3	Spring Arbor (Mich.)	W	3-1
S 4	Central State	W	3-0
S 4	Cedarville	W	3-0
S 4	Findlay	W	3-2
S 8	MARIAN	W	3-1
S 8	SPALDING (Ky.)	W	3-1
S 10	Clarion (Pa.)	W	3-0
S 11	Ashland	L	2-3
S 11	Capital (Ohio)	W	3-0
S 11	Tiffin (Ohio)	W	3-1
S 15	INDIANA WESLEYAN	W	3-1
S 17	IPFW	L	0-3
S 18	Saint Joseph's	W	3-2
S 21	Anderson	L	0-3
S 24	UW-PARKSIDE	L	0-3
S 24	WHEELING JESUIT	W	3-2
S 25	LEWIS	W	3-0
S 28	SIU EDWARDSVILLE	L	0-3
S 30	Huntington	W	3-1
S 30	Tri-State	W	3-1
O 1	Northern Kentucky	L	0-3
O 2	Bellarmino	L	1-3
O 8	Lewis	L	1-3
O 9	Wisconsin Parkside	L	1-3
O 12	BELLARMINE	W	3-1
O 20	Rose-Hulman	W	3-0
O 22	KY. WESLEYAN	W	3-0
O 23	SOUTHERN INDIANA	W	3-0
O 27	Taylor	L	0-3
O 29	SAINT JOSEPH'S	L	1-3
O 30	IPFW	L	0-3
N 4	SIU EDWARDSVILLE	L	0-3
N 5	Quincy	L	0-3
N 6	Missouri-St. Louis	L	1-3

### 2000 (26-12, 7-9 GLVC)

A 29	ST. FRANCIS (Ind.)	W	3-1
S 1	Southern Connecticut	W	3-0
S 1	North Carolina Central	W	3-0
S 2	UMass-Lowell	W	3-1
S 2	New Haven (Conn.)	W	3-2

S 5	Indiana Wesleyan	L	1-3
S 8	Trinity Inv (Ill.)	W	3-0
S 8	Grace (Ind.)	W	3-0
S 9	Cumberland	W	3-0
S 9	Central State	W	3-0
S 9	Aquinas	W	3-0
S 9	Cedarville	W	3-0
S 12	Grace	W	3-0
S 15	MISSOURI-ST. LOUIS	W	3-0
S 16	QUINCY	L	1-3
S 20	NO. KENTUCKY	L	1-3
S 22	SAINT JOSEPH'S	W	3-0
S 22	WHEELING JESUIT	W	3-0
S 23	IPFW	L	0-3
S 29	Lewis	L	0-3
S 30	Wisconsin-Parkside	W	3-1
O 6	BELLARMINE	W	3-0
O 7	KY. WESLEYAN	W	3-1
O 11	Kentucky State	W	3-0
O 11	Spalding	W	3-0
O 12	Marian	W	3-1
O 17	Bellarmino	W	3-1
O 20	NEW HAVEN (Conn.)	W	3-0
O 20	UW-PARKSIDE	W	3-0
O 21	LEWIS	L	1-3
O 26	TAYLOR	W	3-2
O 27	Southern Indiana	L	2-3
O 28	SIU EDWARDSVILLE	W	3-0
O 28	Rockhurst	L	0-3
O 31	Northern Kentucky	L	0-3
N 3	IPFW	L	0-3
N 4	St. Joseph's	L	2-3
N 9	Lewis	L	0-3

### 2001 (25-10, 8-6 GLVC)

A 24	Fairmont St. (W.Va.)	W	3-0
A 24	Ferris State	L	0-3
A 25	Lake Superior	L	1-3
A 25	Saginaw Valley	W	3-0
A 31	Lincoln Memorial	L	2-3
S 1	Tiffin (Ohio)	W	3-0
S 1	Ashland	W	3-1
S 5	GRACE	W	3-0
S 7	Judson (Ill.)	W	3-0
S 7	Grace	W	3-0
S 8	Cornerstone	W	3-0
S 8	Robert Morris	W	3-0
S 8	Cornerstone	W	3-0
S 8	Grace	W	3-0
S 14	SAINT JOSEPH'S	W	3-0
S 19	Northern Kentucky	L	0-3
S 21	Quincy	W	3-2
S 22	Missouri-St. Louis	W	3-2
S 25	BELLARMINE	W	3-0
S 26	Saint Joseph's	W	3-1
S 29	Georgetown (Ky.)	W	3-0
S 29	Trevecca Nazarene	W	3-0
O 5	UW-PARKSIDE	W	3-0
O 6	LEWIS	W	3-1
O 10	NO. KENTUCKY	L	1-3
O 11	INDIANA WESLEYAN	W	3-1
O 16	SPALDING (Ky.)	W	3-1
O 19	Kentucky Wesleyan	W	3-0
O 20	Bellarmino	W	3-1
O 26	Lewis	L	0-3
O 27	Wisconsin-Parkside	L	0-3
N 2	SIU EDWARDSVILLE	L	2-3
N 3	SOUTHERN INDIANA	L	0-3
N 6	HUNTINGTON	W	3-0
N 8	Southern Indiana	L	0-3

### 2002 (26-12, 7-6 GLVC)

A 31	Findlay	L	1-3
A 31	Lake Superior State	L	2-3
S 1	Wayne State	L	1-3
S 1	Saginaw Valley	W	3-0
S 4	St. Francis (Ind.)	W	3-0
S 6	Glennville Sate (W.Va.)	W	3-0
S 7	Tiffin (Ohio)	W	3-0
S 7	West Virginia Wesleyan	W	3-0

S 7	Ashland	W	3-0
S 13	New York Tech	W	3-2
S 13	Bentley (Mass.)	W	3-1
S 14	Southampton (N.Y.)	W	3-0
S 14	C.W. Post (N.Y.)	W	3-0
S 17	Indiana Wesleyan	L	0-3
S 20	SOUTHERN INDIANA	L	0-3
S 21	KY. WESLEYAN	W	3-0
S 21	KENTUCKY STATE	W	3-0
S 27	Lewis	L	0-3
S 28	Wisconsin-Parkside	L	0-3
O 4	Northern Kentucky	W	3-1
O 5	Bellarmino	W	3-0
O 5	West Virginia Wesleyan	W	3-0
O 8	Saint Joseph's	W	3-2
O 11	Wheeling Jesuit	W	3-2
O 11	Fairmont State	W	3-1
O 12	Charleston	W	3-0
O 18	MISSOURI-ST. LOUIS	W	3-0
O 19	SIU EDWARDSVILLE	L	0-3
O 22	Spalding (Ky.)	W	3-0
O 25	UW-PARKSIDE	L	1-3
O 26	LEWIS	L	0-3
O 30	SAINT JOSEPH'S	W	3-0
N 1	Quincy	W	3-0
N 7	Taylor	L	2-3
N 8	BELLARMINE	W	3-0
N 9	NO. KENTUCKY	W	3-2
N 14	SIU EDWARDSVILLE	W	3-2
N 15	SOUTHERN INDIANA	L	2-3

### 2003 (29-11, 12-3 GLVC)

A 30	Nebraska-Omaha	W	3-2
A 30	West Virginia State	W	3-0
A 30	Carson-Newman	W	3-0
A 31	Charleston (W.Va.)	W	3-0
A 31	Nebraska-Omaha	L	1-3
S 3	Marian	W	3-0
S 5	Findlay	L	2-3
S 5	Northwood	W	3-1
S 6	Lake Superior State	W	3-2
S 6	Hillsdale	L	2-3
S 10	ST. FRANCIS (Ind.)	W	3-1
S 12	Wheeling Jesuit (W.Va.)	L	2-3
S 12	Findlay	L	2-3
S 13	Northern Michigan	L	1-3
S 13	Fairmont State	W	3-0
S 16	INDIANA WESLEYAN	W	3-2
S 19	Northern Kentucky	L	0-3
S 20	Bellarmino	W	3-1
S 23	Saint Joseph's	W	3-0
S 26	Kentucky Wesleyan	W	3-0
S 27	Southern Indiana	W	3-0
O 3	UW-PARKSIDE	W	3-0
O 4	LEWIS	L	2-3
O 4	GEORGETOWN (Ky.)	L	2-3
O 8	SPALDING (Ky.)	W	3-1
O 10	BELLARMINE	W	3-0
O 11	NO. KENTUCKY	W	3-2
O 14	SAINT JOSEPH'S	W	3-1
O 18	ANDERSON	W	3-0
O 24	SIU EDWARDSVILLE	L	0-3
O 25	Missouri-St. Louis	W	3-2
O 31	Lewis	W	3-0
N 1	Wisconsin-Parkside	W	3-2
N 7	TAYLOR	W	3-2
N 7	ST. FRANCIS (Ill.)	W	3-1
N 8	QUINCY	W	3-1
N 13	Wisconsin-Parkside	W	3-0
N 14	SIU EDWARDSVILLE	W	3-1
N 15	Southern Indiana	W	3-2
N 20	Grand Valley State*	L	2-3

\*NCAA tournament match

### 2004 (23-13, 12-4 GLVC)

A 27	Alabama-Huntsville	W	3-0
A 27	Central Arkansas	W	3-0
A 28	Lincoln Memorial	W	3-0
S 1	MARIAN	W	3-1
S 3	Cal Poly Pomona	W	3-2

S 3	Western New Mexico	L	1-3
S 4	Chaminade	L	1-3
S 4	Cal State LA	W	3-2
S 10	Northwood	L	1-3
S 10	Ferris State	L	2-3
S 11	Grand Valley	L	0-3
S 14	Anderson	W	3-0
S 17	QUINCY	W	3-0
S 18	MISSOURI-ST. LOUIS	W	3-0
S 24	LEWIS	W	3-0
S 25	UW-PARKSIDE	W	3-0
S 25	SPALDING	W	3-0
S 29	SAINT JOSEPH'S	W	3-0
O 1	Missouri-St. Louis	W	3-0
O 2	Quincy	W	3-1
O 8	BELLARMINE	W	3-0
O 9	Georgetown (Ky.)	L	0-3
O 9	Lee (Tenn.)	L	0-3
O 12	St. Francis (Ind.)	W	3-0
O 15	Kentucky Wesleyan	W	3-0
O 16	Northern Kentucky	L	1-3
O 20	St. Joseph's	W	3-1
O 22	Southern Indiana	L	0-3
O 23	SIU EDWARDSVILLE	L	0-3
O 27	Indiana Wesleyan	W	3-1
O 29	NO. KENTUCKY	L	2-3
O 30	KY. WESLEYAN	W	3-0
N 2	Findlay	L	0-3
N 6	Wisconsin-Parkside	W	3-1
N 11	Lewis	W	3-1
N 12	Southern Indiana	L	0-3

### 2005 (24-14, 11-5 GLVC)

A 26	Christian Brothers	W	3-2
A 26	West Florida	L	1-3
A 27	Florida Southern	L	0-3
A 27	Arkansas-Monticello	W	3-0
A 30	ST. FRANCIS	W	3-0
S 2	St. Leo (Fla.)	W	3-1
S 2	Minnesota State	L	1-3
S 3	Michigan Tech	L	2-3
S 3	Winona State (Minn.)	W	3-1
S 9	Grand Valley State	L	0-3
S 10	Lake Superior State	W	3-0
S 10	Ashland	L	0-3
S 16	Northern Kentucky	L	2-3
S 17	Bellarmino	L	2-3
S 19	Marian	W	3-1
S 23	QUINCY	W	3-0
S 24	MISSOURI-ST. LOUIS	W	3-0
S 27	ST. JOSEPH'S	W	3-1
S 30	California (Pa.)	L	2-3
S 30	Wheeling Jesuit	W	3-1
O 1	Anderson Broadus	W	3-0
O 1	Indiana (Pa.)	W	3-1
O 4	FINDLAY	L	1-3
O 7	INDIANA WESLEYAN	W	3-1
O 8	Kentucky Wesleyan	W	3-0
O 11	LEWIS	W	3-2
O 14	DRURY	W	3-0
O 15	ROCKHURST	L	2-3
O 21	Lewis	W	3-2
O 22	Wisconsin-Parkside	W	3-1
O 25	Saint Joseph's	W	3-0
O 28	BELLARMINE	W	3-0
O 29	NO. KENTUCKY	W	3-1
N 4	SIU EDWARDSVILLE	L	2-3
N 5	Southern Indiana	L	2-3
N 10	Southern Indiana	W	3-1
N 11	Rockhurst	W	3-2
N 12	SIU EDWARDSVILLE	L	1-3

All schools listed are referred to by their current names.

## ALL-TIME ROSTER

Lisa Acton	1981-84	Diane Ely	1995	Laura Yoder	2002	Tami Schlicher	1981
Lisa Allen	1983	Paula Ensinger	1980-81	Heidi Lawrence	1986	Amy Schmitz	2004-05
Brittney Allison	2003	Ashley Fallos	2005	Kristin Lay	2002-05	Cassie Schott	2005
Paige Balka	1989-92	Jodi Ferguson	1978-79	Lana Lukas	2003-04	Christa Schuler	1996
Erica Bankowski	1999-2002	Joyce Gage	1979-82	Rosalyn Marsh	1978-79	Lisa Schulfer	2004-05
Katie Beck	2003-04	Mary Gallagher	1978	Shaun McAllister	2001-04	Jenny Sebert	1980-82
Mary Beth Acra	1987-88	Kelly Gamble	1998	Deanna McClure	2001-04	Tenile Sheely	2004
Trina Bluhm	1979-81	Emily Geiss	1998	Erin McPhilamy	2001-02	Nancy Short	1982
Whitney Boling	2002-05	Katie Gompert	2001-02	Lindsey Medler	2002	Cori Smith	1995-97
Karen Bono-Hulen	1991	Carmen Griffith	1987-90	Ashlee Mennen	2003-04	Ronda Smith	1987-90
Heather Boots	1997-98	Shelley Groover	1987-90	Shannon Miggenburg	1993-94	Susie Smith	1980
Rachael Bozek	1996-99	Barbara Hahn	1999-2002	Lucinda Mikesell	1984	Rachel Sorg	1997-98, 2000
Angie Braden	1989	Samantha Hardy	1983	Bethany Miller	1999	Sheri Spangler	1984
Emily Bristol	2001-02	Casey Harter	1999-2002	Cinda Miller	1987-89	Laine Stanley	1989
Christy Bruner	1995	Mandie Hawkins	1992-93	Erin Miller	1995-97	Ann Stautberg	1987-88
Paula Bueno	1978-79	Kristi Hayden	1994-95	Jami Miller	1998-99	Susan Steffy	1988
Julie Burkhardt	1980-83	Kimi Hellenberg	1984-87	Julie Miller	1990	Jennifer Steward	1992-93
Marcia Burns	1978-81	Jill Heoppner	1991	Kristi Miller	1991-94	Amy Strieter	1992-95
Alyssa Carlotta	2005	Jill Hetherington	1990-93	Lesly Miller	1991-93	Jennifer Suba	1994-97
Jessica Clark	2003	Kirsten Hey	1991	Paula Miller	1994-96	Lynne Suroviak	1989, 92
Monica Clark	1988	Mendy Hill	1996-99	Lisa Minardo	1985-86	Lynne Surviak	1990
Sarah Clough	2003-04	Jodi Hilliard	1993-95	Cindy Mohr	1983-86	Deb Sweet	1979-80
Monica Cooper	1996	Stephanie Hoff	1996-97	Amanda Myers	1997	Kristie Swing	1980-83
Christy Cothron	1992	Mandy Holbrook	1993	Jami Neal	1986-87	Lori Taylor	1979
Donna Oakerson	1985-86	Misty Holder	1998	Tricia Neely	1989-92	Susan Trame	1991-94
Jamie Cox	1985	Emeral Holladay	2005	Valerie Nelson	1980	Teresa Tunget	1995
Susan Crafton	1978	Earleen Hoover	1978	Dawn Northey	1979	Natalie Turner	1999
Christy Crutchfield	1986	Janet Hostetler	1983	Carrie Oehler	1995	Denise Unrue	1991-94
Becky Davis	1984-86, 88	Emily Huey	2002-05	Katie Olson	2005	Jill Van Velse	1996-97
Sherrie Perkins	1978-79	Tristen Hulse	1998-2001	Ashley Ottinger	1999	Lori Vissing	2001-02
Jennifer Dennenmann	1983	Jenny Imel	1985	Delanie Phillips	1998-2001	Penii Vonstetina	1990-91
Toni Dodson	1984-87	Jen Johnson	1993-96	Emily Pilgrim	1997	Dana Walsko	1999-2000
Lise Dolasinski	1998-2001	Jennifer Johnson	2000-03	Justina Plummer	1985-86	Mary Margaret Warrick	1997-2000
Leanna Doty	1983-84	Tandace Joseph	1980-82	Barb Pugsley	1989	Leanne Webb	1987-90
Peggy Doughty	1978	Kathi Kanable	1986-89	Angela Ranta	1999-2002	Laura Welch	1991,94
Leah Duling	1987	Stephanie Kirtlan	2000	Kristina Reed	1999	Stacy White	1989
Bethany Dulle	2005	Heather Kissel	1995-98	Tina Ridener	1984	Terri Wiese	1981-83
Lindsay Duncan	2004-05	Karen Koelmel	1978	Beth Robbins	2005	Kathy Yates	1983-85
Alissa Eaton	2002-03	Emily Kubala	1999-2001	Lynne Ross	2003-05		
Donna Egenolf	1980-81	Susie Kuntz	1983-86	Courtney Sands	1993		
Mary Eichenberger	1982-85	Aimee Lammert	1991-94	Cynthia Sare	1978		

*All-time roster compiled from final statistics from 1978-2005.*

## Ruth Lilly Fitness Center



Opened in 1984, the Ruth Lilly Fitness Center is the nucleus of the Greyhound Athletic department. The Ruth Lilly Center is home to coaches' offices, Methodist Hospital/Methodist Sports Medicine Life Fitness Center, video viewing rooms, meeting rooms, athletic training room and athletic administration offices. The weight room, a part of the Life Fitness Center, has been extensively renovated. The Zupancic Wall of Fame, named for former Greyhound and current Colts Vice President of Business Development Tom Zupancic, is featured in the weight room.

The Life Fitness Center includes Cybex, Hammer, and Nautilus selectorized weight machines for total body toning and rehabilitation. It also features more than 10,000 pounds in free weights, dumbbells, and heavy lifting equipment for power training.

The RLFC pool, opened in 1982, is a 25-yard/meter eight-lane competitive facility that also includes a separate 13-foot-deep diving well with two one-meter and one three-meter maxiflex diving boards. Daktronics timing system is used. The facility features the use of underwater viewing, helpful in stroke analysis.

The Greyhound volleyball team and wrestling teams host home events at the Ruth Lilly Fitness Center. The sunken court allows fans to enjoy the action from both the bleachers and from the track that encircles the court. The west side bleachers hold 500 fans with standing room capacity for 500 more. The court surface doubles as a full-length basketball practice area as well as four other practice shooting areas.

The Wetherald Wrestling Room, named for legendary coach Terry Wetherald, is on the south end of the gym and houses the Greyhound wrestling program.



**Dr. Beverley PITTS****University President • Ed. D., Ball State University, 1981**

After an exhaustive national search, the University of Indianapolis selected a seasoned Ball State University educator and administrator as its next chief executive.

Beverley J. Pitts, former provost and vice president for academic affairs at Ball State, became the university's eighth president, July 5, 2005. She succeeded Jerry Israel, who retired.

Pitts is the first female president in the 103-year history of the comprehensive institution, which has 4,100 undergraduate and graduate students on its main campus and is affiliated with the United Methodist Church.

The selection of Pitts was based on her impressive leadership qualities, solid record of accomplishments, and outstanding communication skills, said Sue Anne Gilroy, chair of the Search Committee. In addition to 20 years as a communication professor and administrator at Ball State, Pitts skillfully shepherded that institution through an especially difficult period while serving as acting president in 2004.

"The goal of our Search Committee was to conduct an exhaustive national search that would be open and inclusive, resulting in the selection of a visionary and dynamic, experienced and entrepreneurial president who will guide the university to the next level of excellence, building upon the impressive accomplishments of Jerry Israel," Gilroy said. "We found that person right here in Indiana."

Pitts was among four finalists, culled from nearly 80 candidates, who were invited to campus for interviews with seven advisory committees representing students, faculty, staff, alumni and community leaders. "With every constituent group, she was the universal favorite," said Christel DeHaan, chair of the Board of Trustees.

"I thoroughly have enjoyed working these last seven years with Dr. Israel and watching the university prosper under his remarkable leadership," DeHaan said. "The university has made tremendous strides, and is well-positioned for even greater achievements ahead. The Board is convinced that Dr. Pitts is the one to carry the baton forward."

Pitts began her higher education career as an English instructor at Anderson University, where she received a bachelor's degree in English

in 1968. She subsequently earned two degrees from Ball State: a master's in journalism and a doctorate in higher education.

While on the faculty at Anderson from 1977 to 1985, Pitts rose to assistant professor and became founding chair of the Department of Communication. She joined the Ball State faculty in 1985, where she moved through the ranks to become professor of journalism and assume increasing administrative responsibilities.

As provost and vice president for academic affairs, Pitts now has oversight of seven academic colleges and 900 faculty. She played a leadership role in developing the Freshman Connections program, which was identified as one of 13 Best Practice Programs in the Freshman Year by the national Policy Center on the First Year of College. Freshman retention at Ball State went from 67 percent in 1997 to 80 percent by 2003.

Pitts has been the designer or project director for five Lilly Endowment grants to Ball State totaling more than \$36 million. Two of the projects have addressed student retention, and the most recent funded a new Center for Media Design.

"I tried to bring the small, liberal arts experience I had enjoyed so much in my years as student and educator at Anderson, to Ball State through the Freshman Experience and retention programs," Pitts said. "Those experiences transfer well to the University of Indianapolis, which provides an important liberal arts foundation, as well as the opportunity for personal relationships between faculty and students that lead to retention and academic success."

"The university has come so far in the last few years. It has wonderful programs and great potential to serve Indianapolis and Indiana. It's exciting to go to a university that's in such great shape and has so many possibilities ahead. I am hopeful my communications background will help in telling the university's story further, to bring it even greater visibility and prestige."

"It's reassuring to leave the university in such good hands," said Israel. "I'm delighted that someone of Dr. Pitts' experience and leadership ability has accepted the opportunity to become the next president. Her knowledge and visibility in Indiana will allow for a smooth transition and rapid development of her presidency."

**Dr. Sue WILLEY****Director of Athletics**

Dr. Sue Willey is in her fourth year as director of athletics and her 31st overall at the university. She was recently selected as the 2005 Division II Administrator of the Year by the National Association of Collegiate Woman Athletic Administrators (NACWAA). Dr. Willey was also selected as the 2004 "Pathfinder Award Winner" presented in recognition of her strong commitment to provide quality sport and leadership opportunities for girls and women in the state of Indiana. Dr. Willey continues to serve on numerous boards, being appointed to four-year terms on both the NACWAA Executive Board and the DII Nominating Committee. This past summer, she graduated from the NACWAA Institute for Athletic Executives.

UIndy has excelled under Dr. Willey's leadership. Nine teams advanced to NCAA postseason championships and 18 student-athletes were honored as All-Americans in their sport, including a national champion in women's track and the national runner-up in wrestling. Among other honorees, the UIndy women's golf team boasted the country's Freshman of the Year and conference honors were bestowed on three-time conference champion coach in women's tennis as well as the GLVC Scholar Athlete of the Year in that sport. As always, the UIndy student-athlete also succeeded in the classroom as 134 student-athletes were named to their respective conference's all-academic teams while maintaining an overall 3.13 grade point average.

The athletic department's facilities have undergone some major renovations in her tenure. Key Stadium's turf was put in place in the summer of 2004 with the lights being added the following summer. The playing surface at Nicoson Hall was redone last summer and a complete facelift of the west entrance includes murals and a Greyhound logo entrenched in the new terrazzo floor.

Dr. Willey recently completed a four-year term on the highest NCAA Committee available to athletic administrators—the NCAA Division II Management Council. Her Management Council assignments included the DII Budget and Finance Committee, DII Student-Athlete Reinstatement Committee, DII Management Council Identity Subcommittee, DII Championships Regionalization Task Force, DII Project Team to Review Issues Related to Diversity and the DII Championships Eligibility Project Team. Willey served as chair of the DII Management Council during the 2004 year and completed her term of service at in early 2006.

Dr. Willey's responsibilities as director of athletics include participation on several important campus committees. She was the first female to serve on the President's Cabinet, and is a member of the Enrollment

Management Committee as well as the Financial Aid and Policies Committee. She is a regular volunteer for the UIndy United Way Committee, as well as a cook for the campus Midnight Breakfasts.

Dr. Willey serves on the Great Lakes Valley Conference Executive Committee and she is currently serving a four-year term on the NCAA II Great Lakes Region Softball Committee. Dr. Willey has been active in the governance of intercollegiate athletics her entire career. During the late 70's and prior to NCAA committee work, she served on the Executive Committee of the Indiana Association of Intercollegiate Athletics for Women (IAIAW). She also has served on various NCAA Division II regional ranking committees, as well as the D-II legislation committee.

Dr. Willey is a frequent guest speaker for various groups. Her past engagements include speaking at the NCAA Conference Interns Seminar, Gender Equity and Issues Forum, DII Conference Commissioners, NCAA National Convention, UIndy Student Affairs Division, NACWAA/HERS Institute for Administrative Advancement, Women's Leadership Symposium, NCAA Leadership Institute for Ethnic Minority Males, and a Graduate Class from Ball State University.

Due to a growing need for academic support for UIndy student-athletes Dr. Willey submitted an application for an NCAA Grant in 2005. The University of Indianapolis was selected to receive one of six NCAA Division II Strategic Alliance Matching Grants. This grant made it possible for Dr. Willey to enhance the part-time academic advisor position to full-time. Daryl Gibbs was named Assistant Athletics Director for Academic Services and continues to be the driving force behind the growth and development of the CHAMPS/Lifescills program.

A 1993 inductee into the UIndy Athletic Hall of Fame, Dr. Willey earned an incredible 19 letters and 11 MVP awards in her four-year career. She was the "Female Athlete of the Year" from 1972-75. She began her coaching career at her alma mater after graduating cum laude from UIndy in 1975. The versatile Willey coached 23 years at U of I, directing 43 different teams in five sports. She was the GLVC softball "Coach of the Year" in 1989, and her softball teams earned national academic honors in 1996 and 1997.

Dr. Willey is an associate professor of health and physical education at UIndy and has taught in the Department of Kinesiology for more than 26 years, with a special teaching interest in sport ethics. Dr. Willey holds a master's degree and a doctorate from Indiana University.

Baseball	
1949	1964
1952	1971
1953	1973
1954	1974
1956	1981
1958	1982
1959	1984
1961	2001

Men's Basketball	
1949	1964
1951	1965
1956	1967
1960	1997
1963	

Women's Basketball	
1993	2003

Men's Cross Country	
1950	1965
1951	1972
1952	1974
1958	1975
1959	1976
1961	1977
1963	2000

Women's Cross Country	
1992	

Football	
1947	1960
1953	1978
1954	1981
1955	

Men's Golf	
1978	1992
1982	1993
1988	1996
1989	1997
1990	1998
1991	2001

Women's Swim/Dive	
2002	2005
2004	

Women's Tennis	
1988	1996
1990	2002
1991	2004
1993	2005

Men's Tennis	
1955	1992
1960	1993
1979	1994
1989	1995
1991	

Men's Outdoor Track	
1951	1980
1962	1981
1963	2002
1973	2003

Women's Golf	
1999	2001
2000	

Volleyball	
2003	

Women's Outdoor Track	
2002	2004

Wrestling *	
1965	1973
1968	1975
1969	1976
1970	1977
1971	1978



Throughout its rich history of intercollegiate athletics, the University of Indianapolis has been a member of a number of athletic conferences. Known as Indiana Central until 1985, the institution was a highly successful member of the Hoosier College Conference (HCC) from the 1940s through 1970. With its move to the NCAA from the NAIA, the university participated in the Indiana Collegiate Conference (ICC) from 1971-1976 and later the Heartland Collegiate Conference (HCC) from 1976-78. With the exception of football, most Greyhound teams moved to the Great Lakes Valley Conference (GLVC) when it was formed in 1978, becoming a charter member in the new league. Since its inception, many GLVC teams and individual athletes have enjoyed outstanding success at the national level in NCAA Division II.

**GLIAC**

- Ashland University
- Ferris State University
- Findlay University
- Gannon University
- Grand Valley State University
- Hillsdale College
- Lake Superior State University
- Mercyhurst College
- Michigan Tech University
- Northern Michigan University
- Northwood University
- Saginaw Valley State University
- University of Indianapolis
- Wayne State University

Greyhound football teams remained in the Heartland Collegiate Conference from 1978 until 1990 when UIndy became a charter member of the Midwest Intercollegiate Football Conference (MIFC). Formed as a football only conference, the MIFC incorporated teams from the HCC and the Great Lakes Intercollegiate Athletic Conference (GLIAC). In 1999, the MIFC merged as part of the GLIAC and Indianapolis became an associate member as a football only school. The GLIAC is regarded nationally by many as the top football conference in NCAA Division II. In 2000, UIndy men's and women's swimming and diving gained a conference affiliation when both teams joined football as associate members of the GLIAC.

**GLVC**

- Bellarmine University
- Drury University
- Kentucky Wesleyan College
- Lewis University
- Northern Kentucky University
- Quincy University
- Rockhurst University
- Saint Joseph's College
- Southern Illinois University Edwardsville
- University of Indianapolis
- University of Missouri-Rolla
- University of Missouri-St. Louis
- University of Southern Indiana
- University of Wisconsin-Parkside

\*For years, the university has fielded outstanding teams in wrestling, with many of its athletes enjoying competitive success nationally. However, at the present time, no NCAA Division II conference within our geographical range has enough teams participating to conduct conference championships for the sport. Therefore, the wrestling program competes as an NCAA Division II independent.